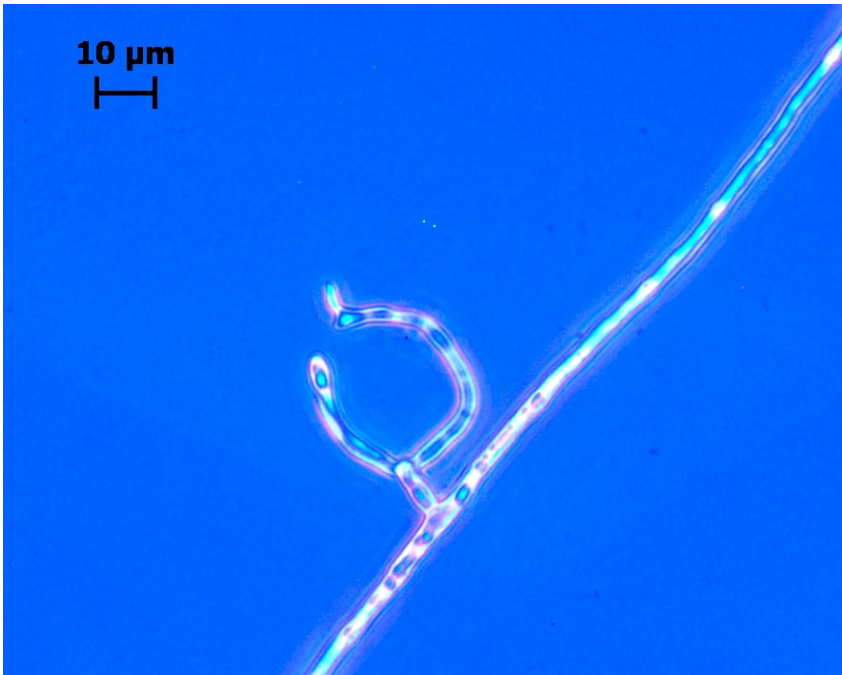
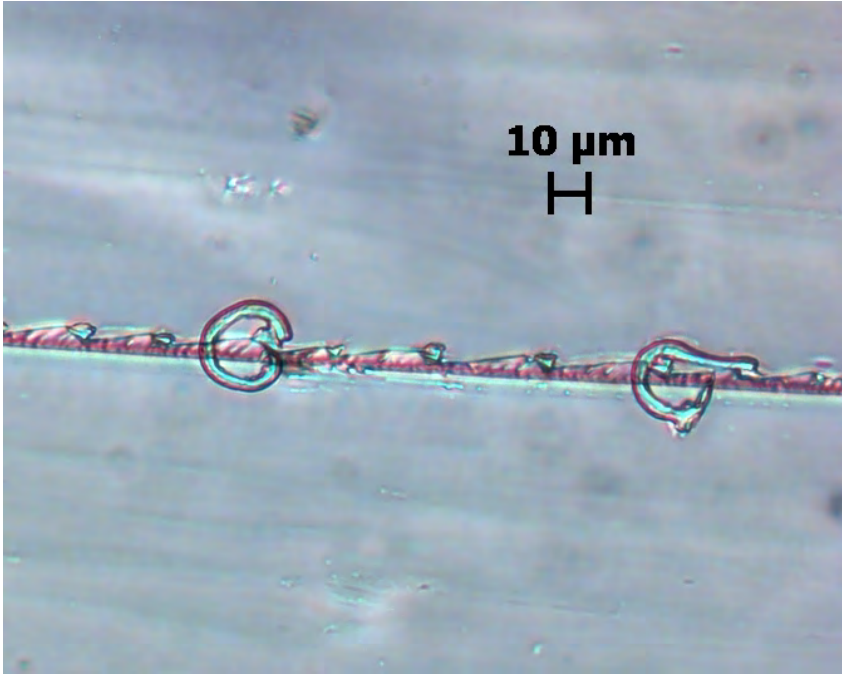


CRITTERS



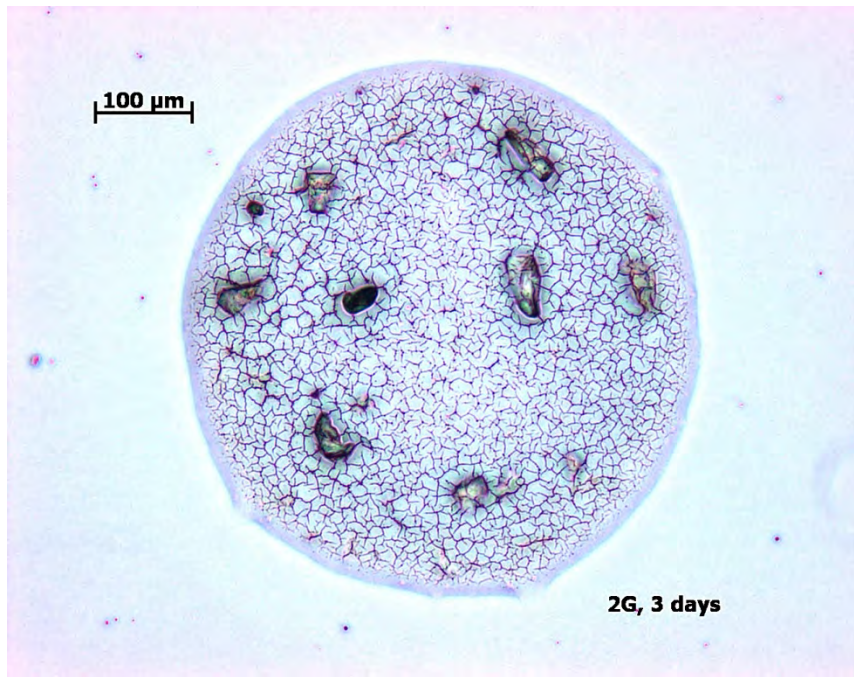
Critt-a1



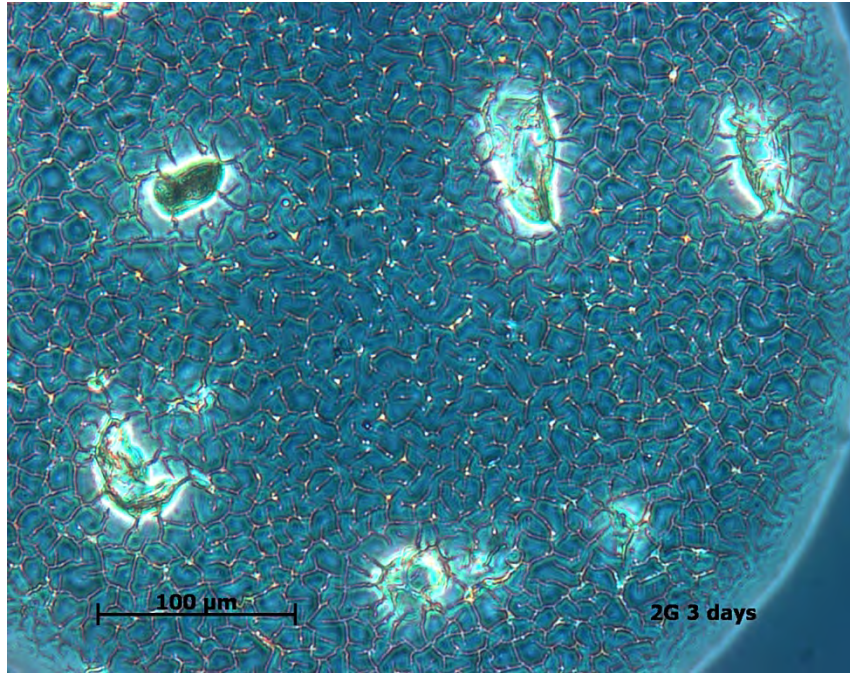
Critt-a2



Critt-a6



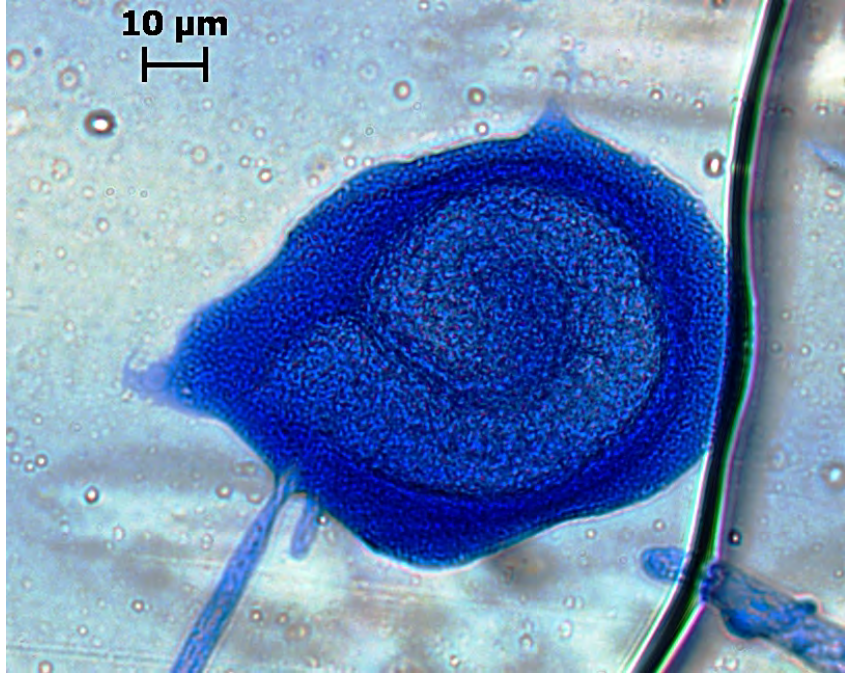
Critt-b1



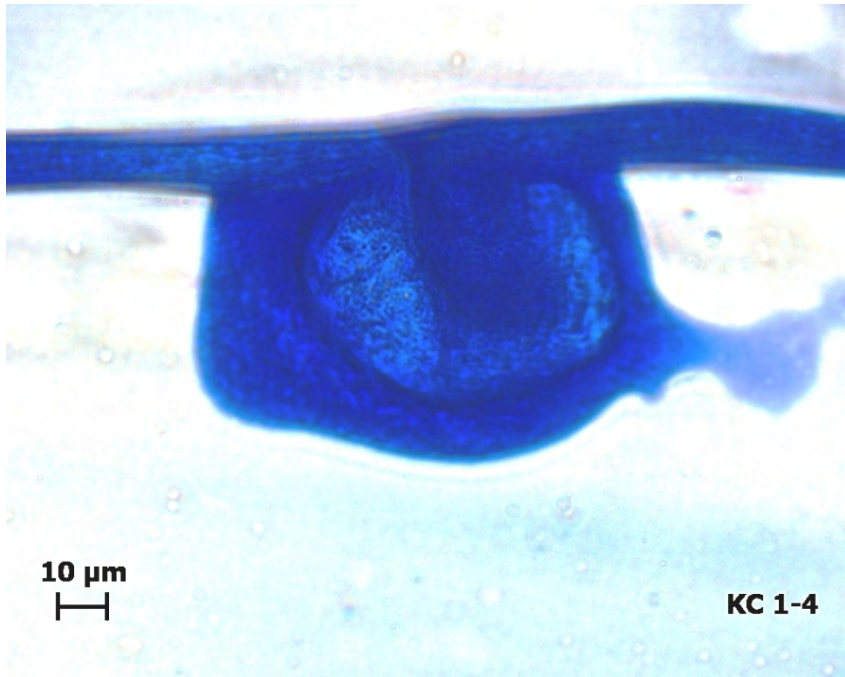
Critt-b2



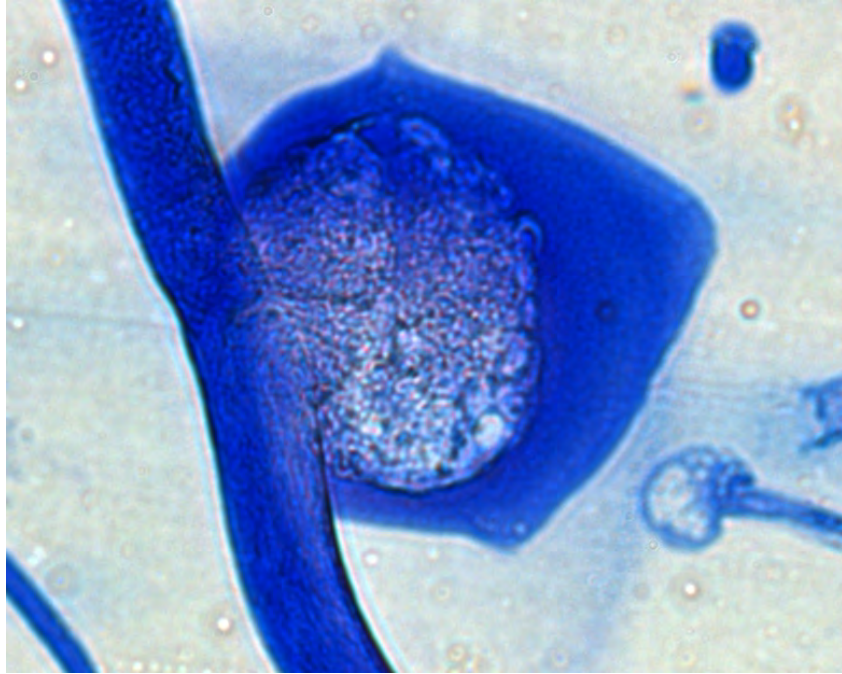
Critt-c1



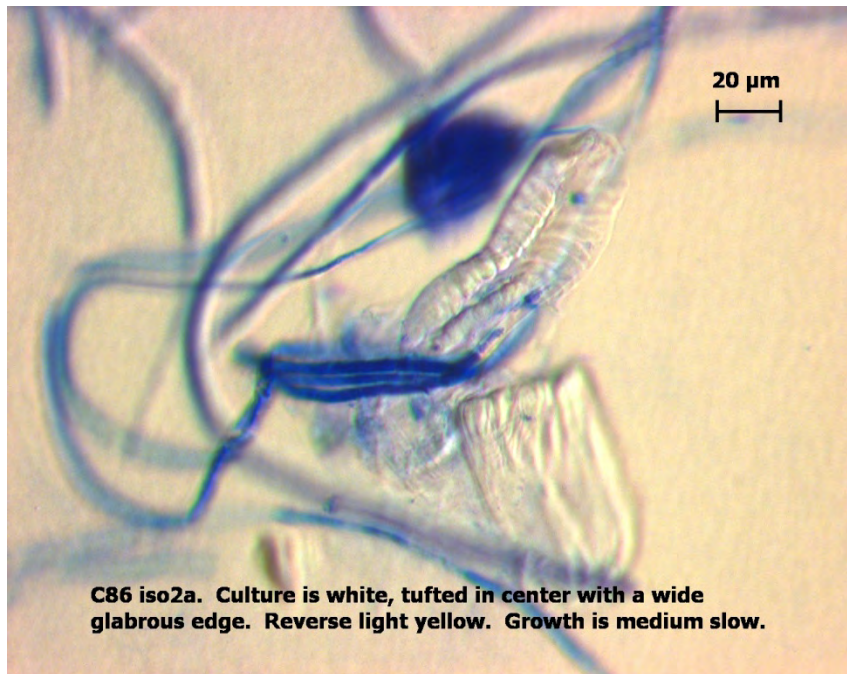
Critt-c2



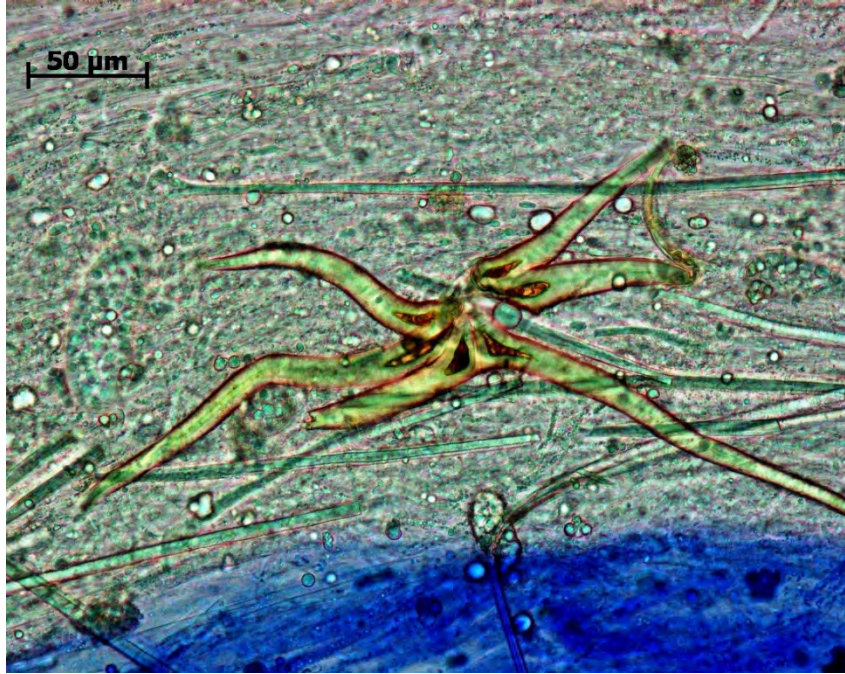
Critt-c3



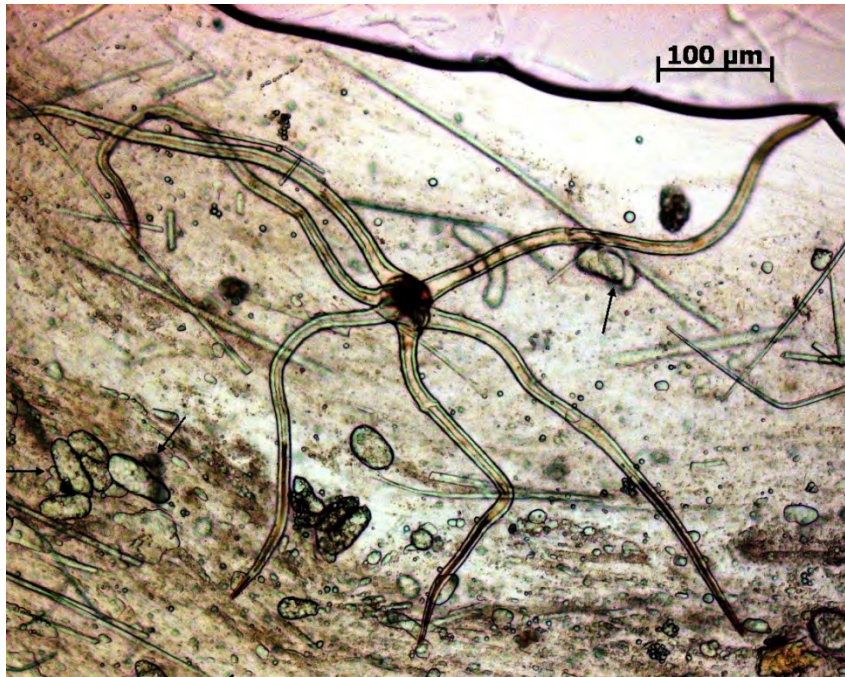
Critt-c4



Critt-c5



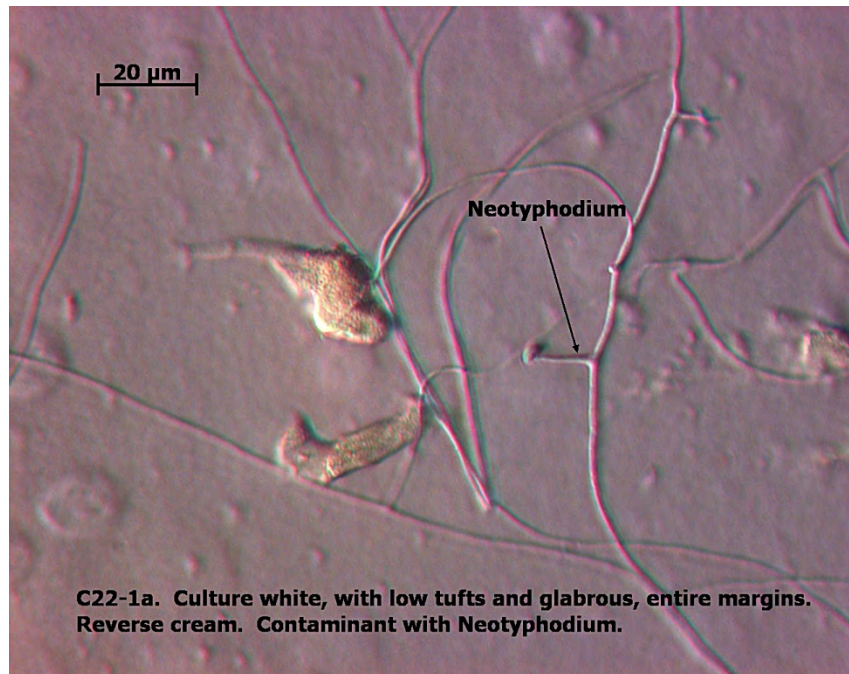
Critt-d1



Critt-d2

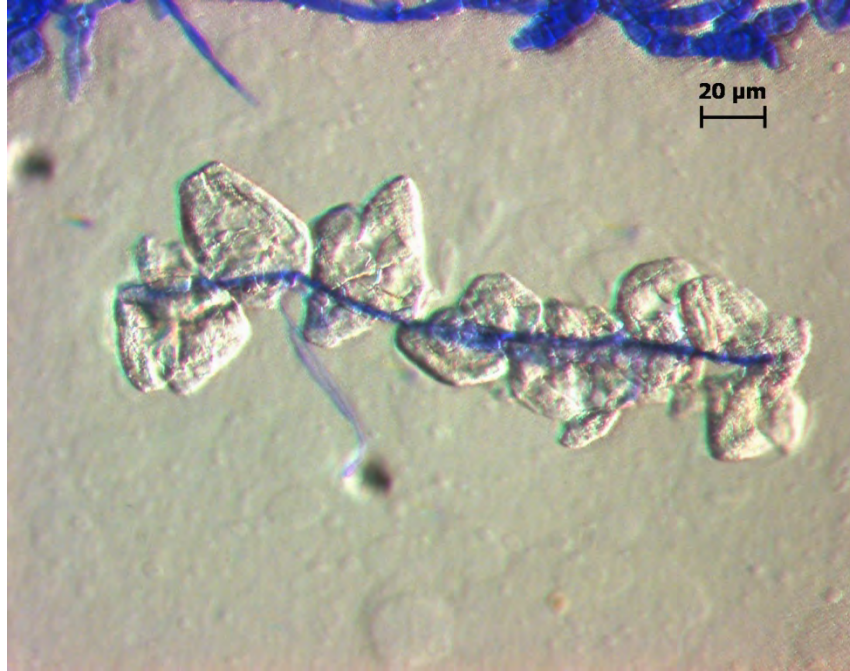


Critt-e1

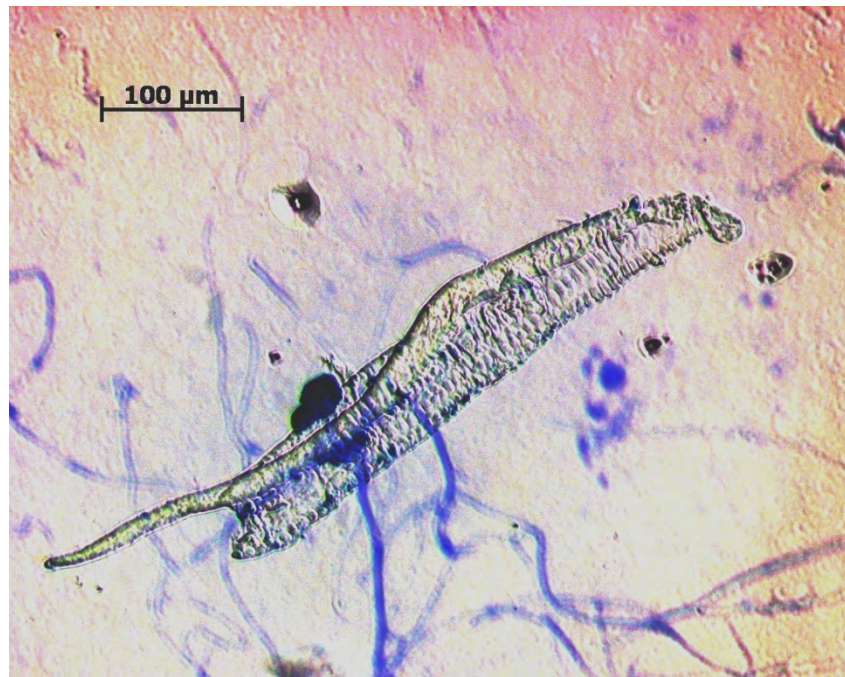


C22-1a. Culture white, with low tufts and glabrous, entire margins. Reverse cream. Contaminant with Neotyphodium.

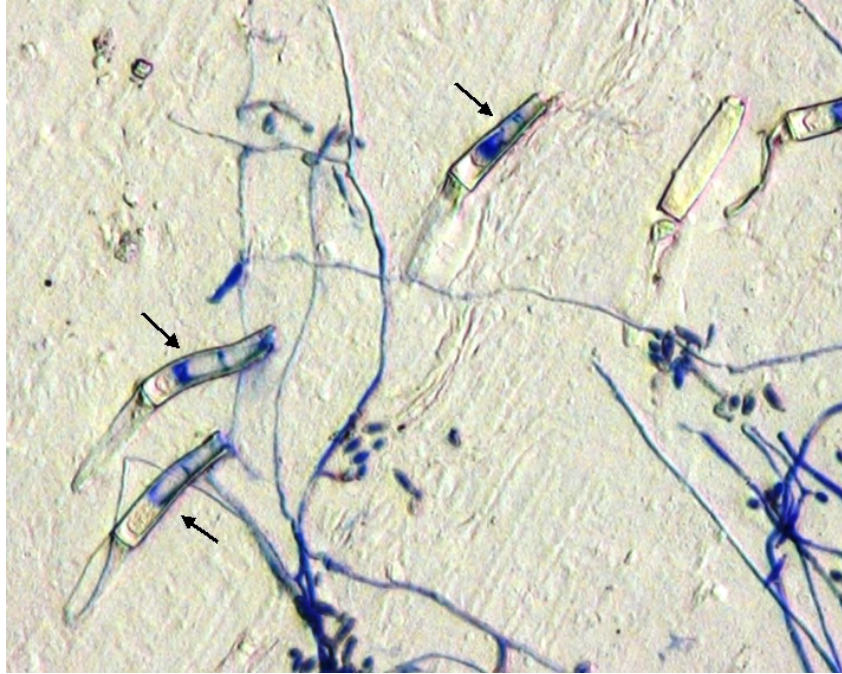
Critt-e2



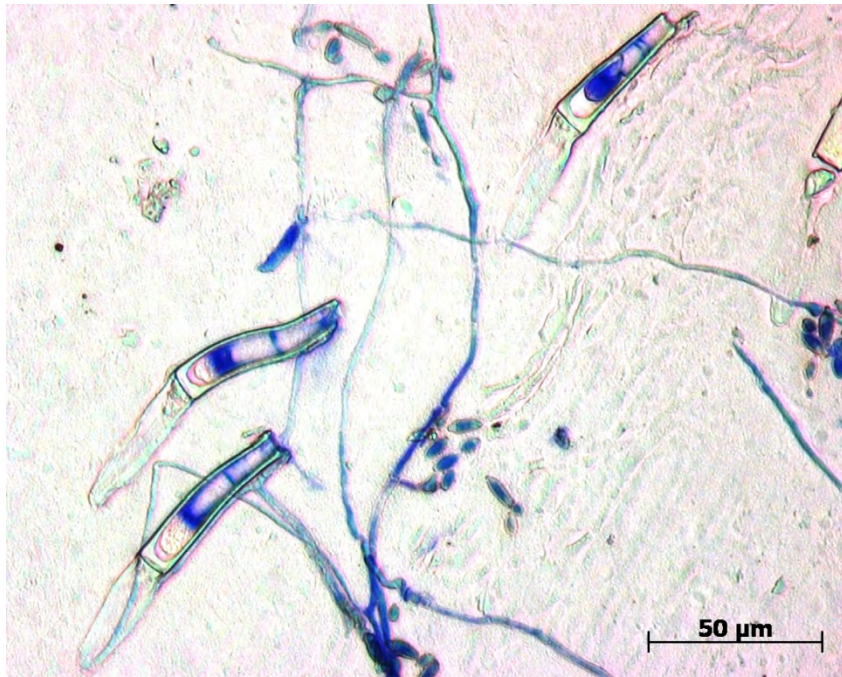
Critt-e3



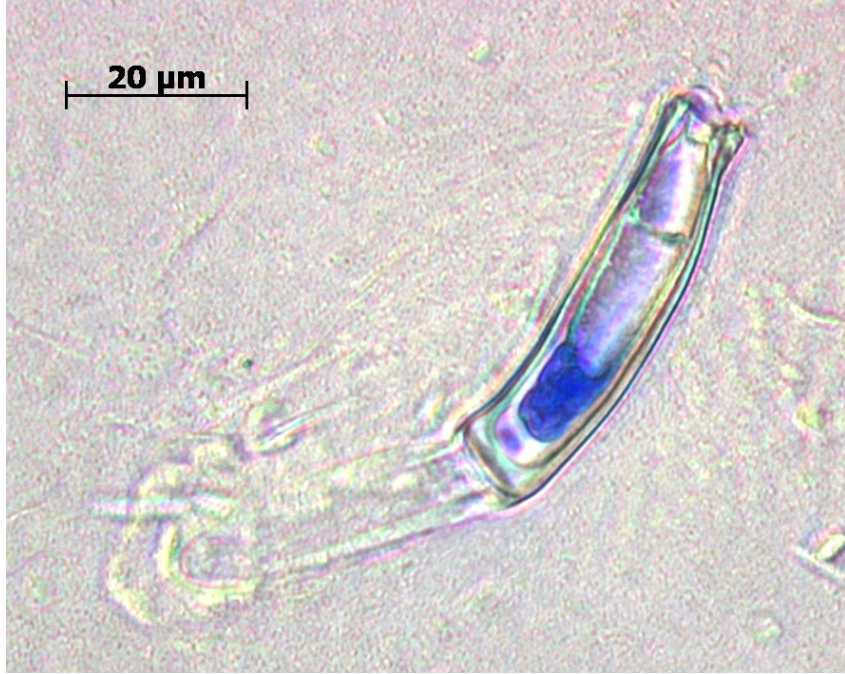
Critt-f



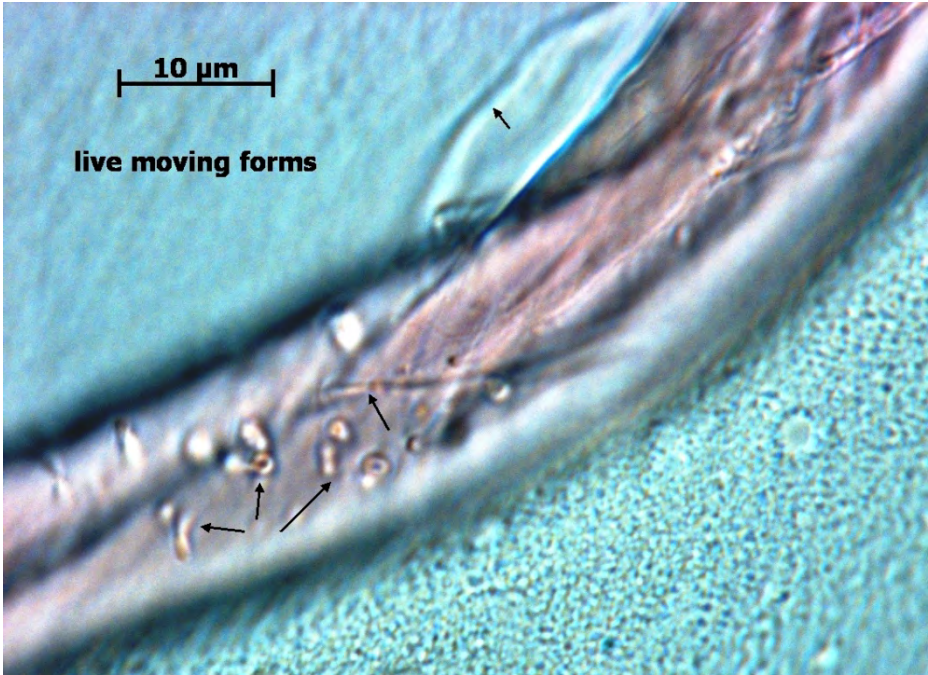
Critt-g1



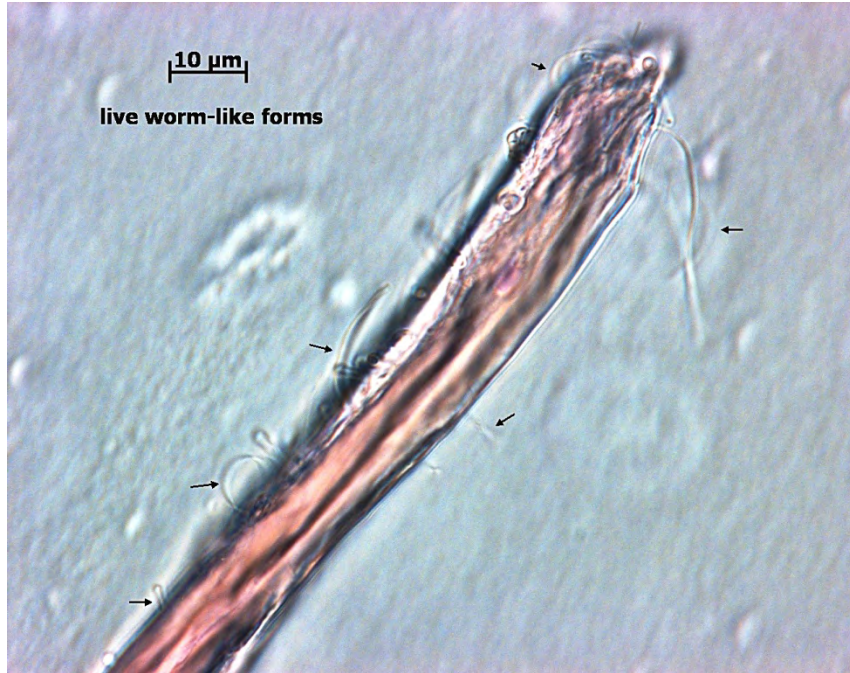
Critt-g2



Critt-g3



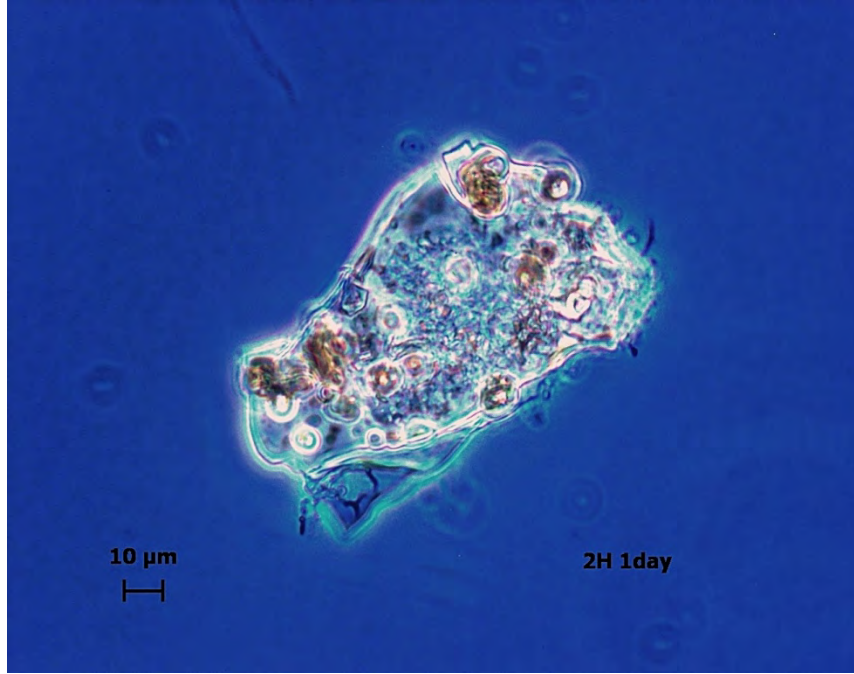
Critt-i2



Critt-i3



Critt-i4



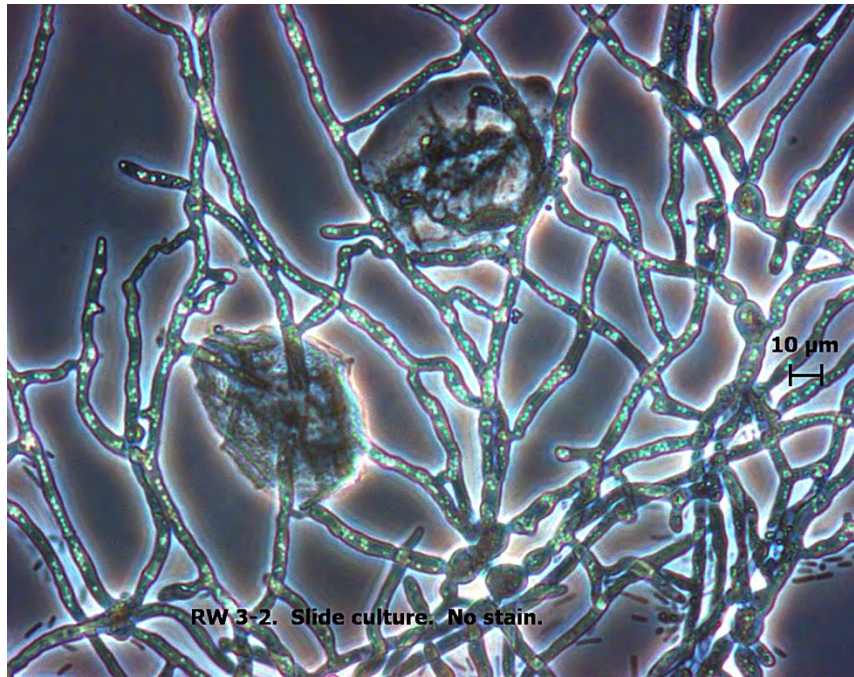
Critt-j1



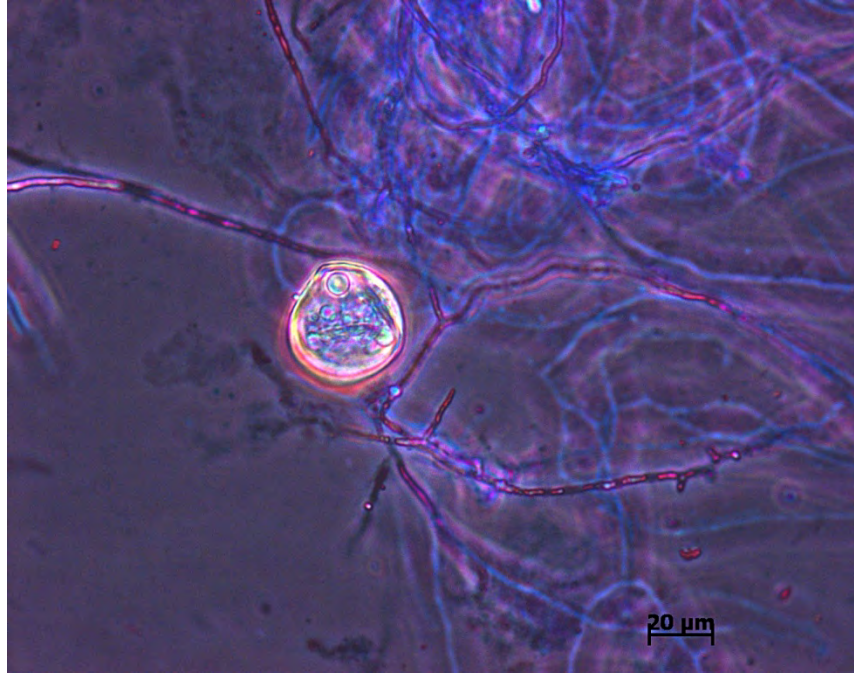
Critt-j2



Critt-j3



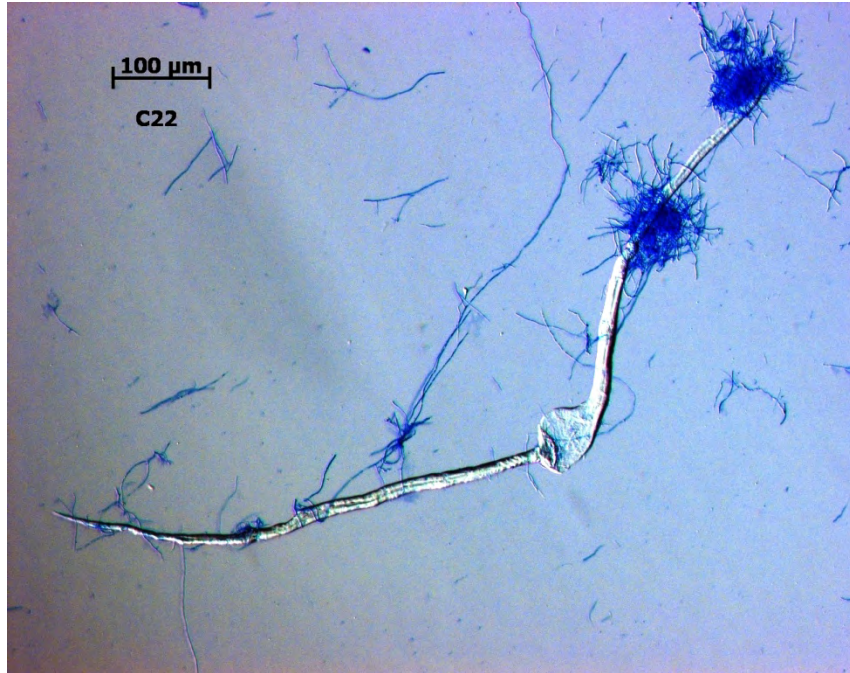
Critt-l1



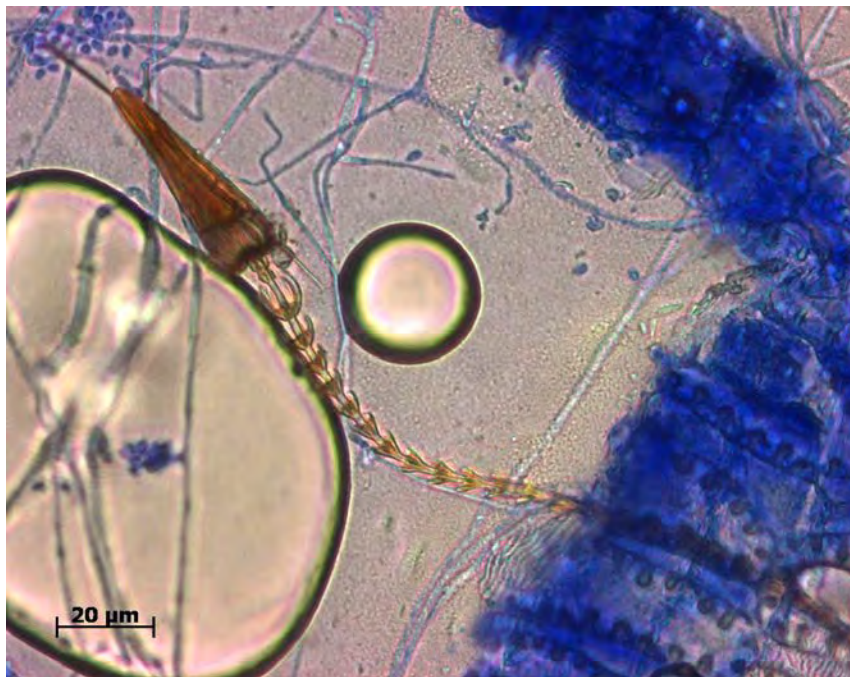
Critt-l2



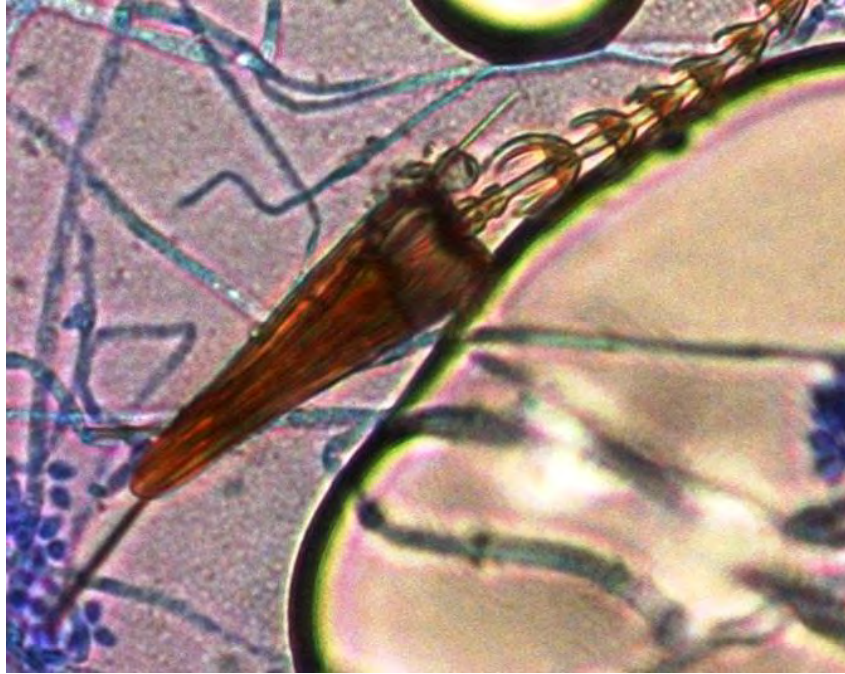
Critt-m



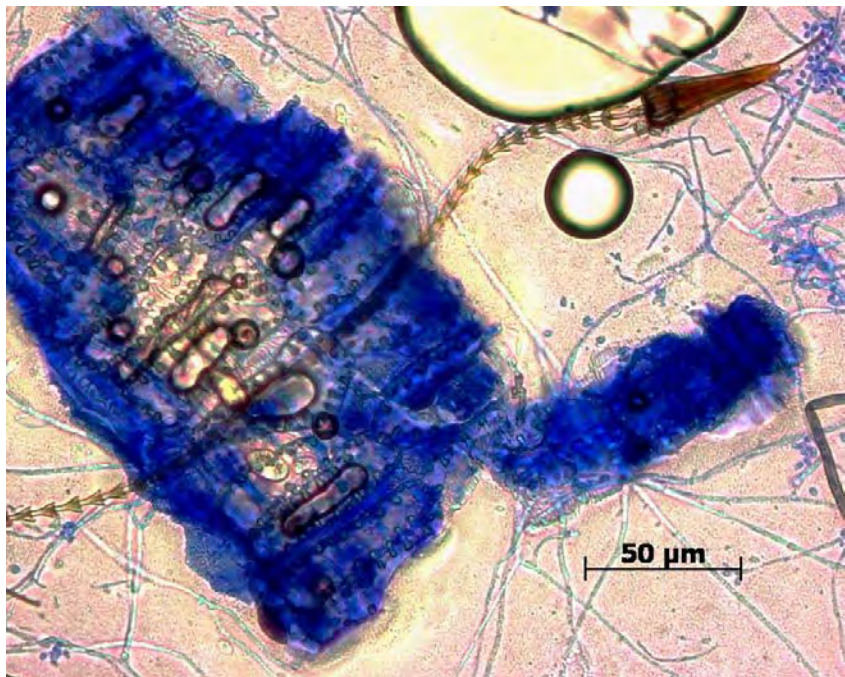
Critt-n



Critt-o1



Critt-o2



Critt-o3



Critt-p