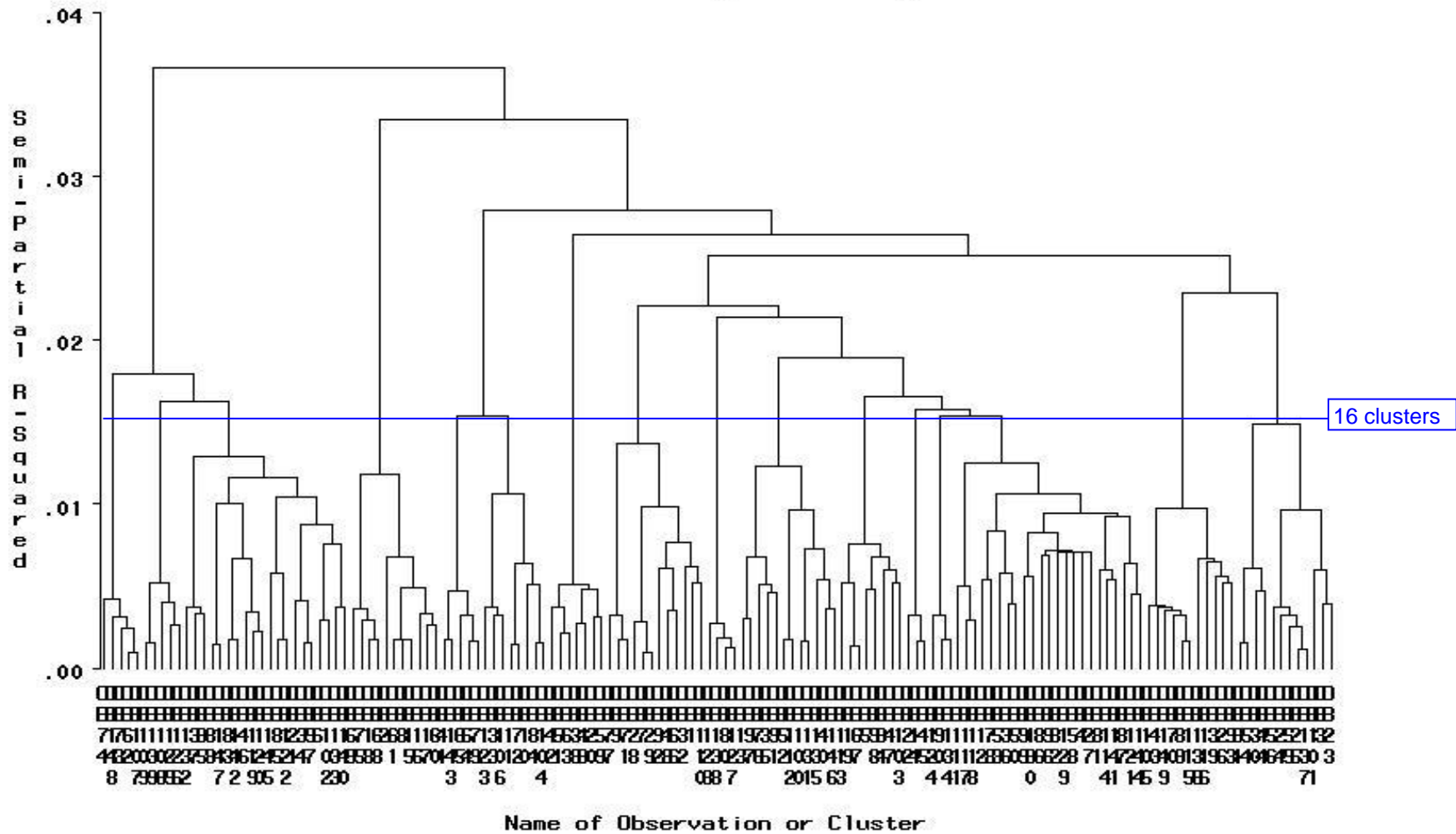


# Lincoln Ram Cluster Analysis using Ward Method



Between Clusters		
n	Mean	Variance
149	0.0236	0.0031

Within Cluster		
	n	Mean
Cluster 1	12	0.12182
Cluster 2	5	0.40136
Cluster 3	12	0.15237
Cluster 4	4	0.48538
Cluster 5	8	0.14207
Cluster 6	8	0.20605
Cluster 7	20	0.12488
Cluster 8	5	0.31938
Cluster 9	12	0.11852
Cluster 10	3	0.42249
Cluster 11	5	0.37791
Cluster 12	11	0.17118
Cluster 13	3	0.41873
Cluster 14	11	0.24708
Cluster 15	7	0.28754
Cluster 16	23	0.01343

