

Pipeline Reclamation Workshop

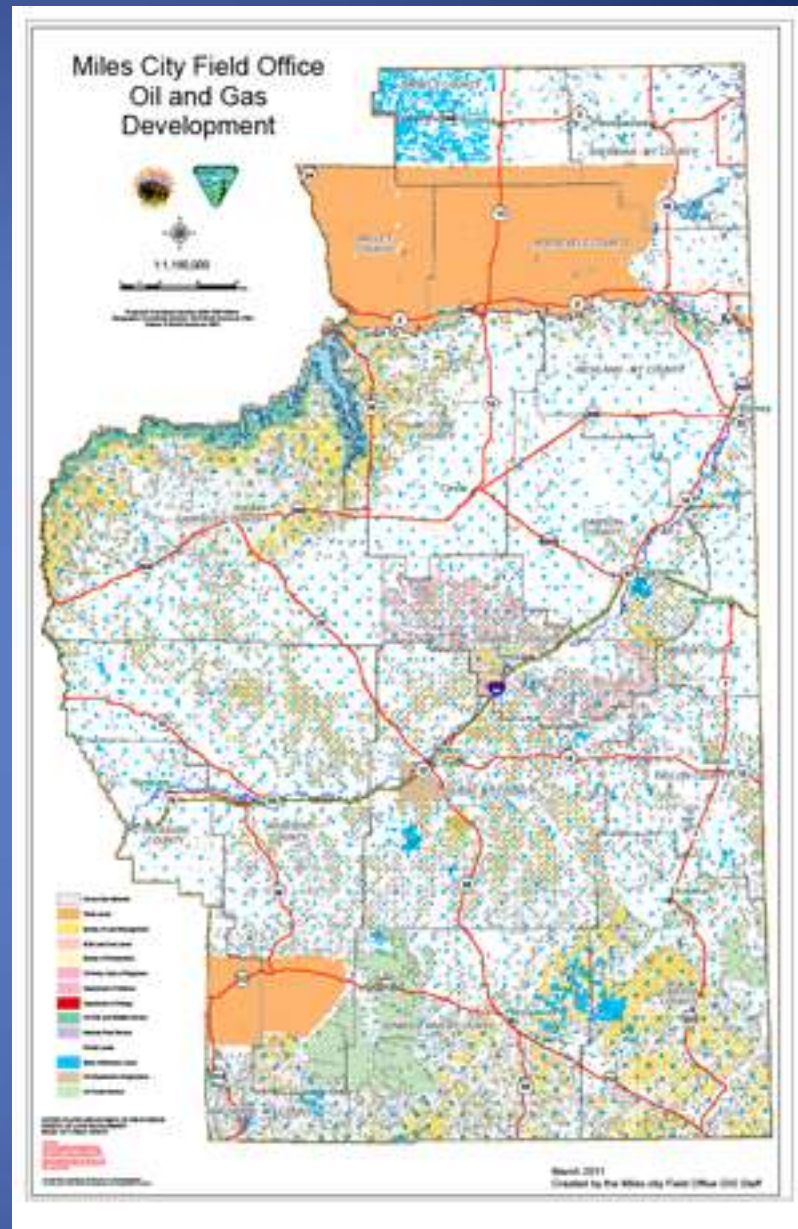
March 05, 2013

Sidney, Montana

**Bureau of Land
Management
Miles City Field Office**

The
11.7 Million Federal
Mineral Acres
Includes 5.8 Million O &G
Mineral Acres

(Remainder is mostly coal
ownership)



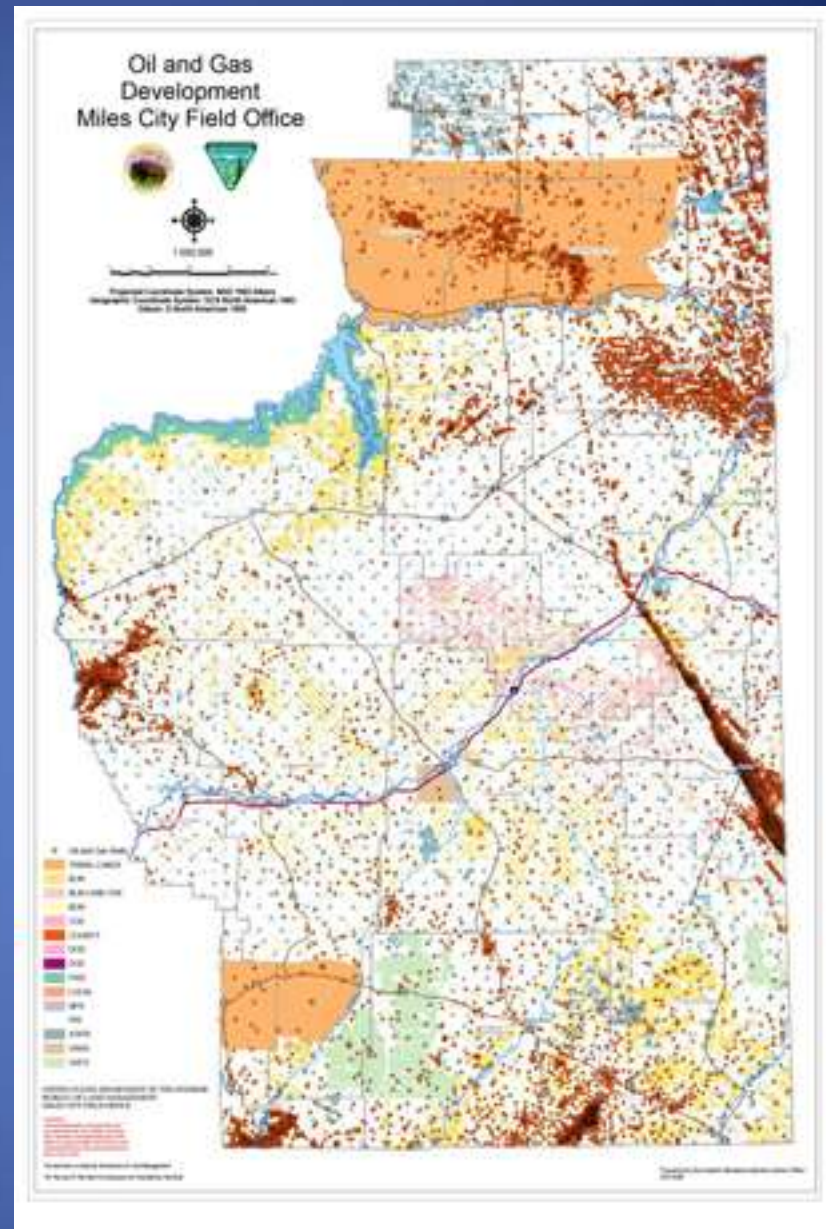
Approximately 4,015
producing wells in MCFO
area (MBOGC, 2009)

891 Federal oil wells

1,253 Federal gas wells

133 Indian oil wells

19 Indian gas wells



CONSTRUCTION
Best Management Practices
(What Works for BLM)



**Pre Construction Field Visit, BLM, Proponent,
Landowners, Const. Co.**

Proposed Construction, Review Resources such as Vegetation, Soils,
Hydrology ,Topography , Wildlife, Archaeology, General Suitability
Make Adjustments – if possible. Develop Mitigation

- Conduct Environmental Analysis
- EA or EIS
- Mitigation Developed
- Decision Made to Approve or Disapprove
- If Approved Permit is Issued with Mitigation Requirements for Protection of Resources
- Timing of Activity for Protection of Wildlife (Sage Grouse, Mule Deer)
- Avoidance of Cultural Resources
- Construction Requirements
- Reclamation Requirements (Topsoil, Seeding Sagebrush & Forbs)
- Conditions of Approval and or Stipulations

South Pine 31-05A Flowline





10/30/2008 10:29







What Doesn't Work for BLM

Not Following Our Process
For Permitting
Conducting Timely Inspections



08/03/2011 11:54

Anticline Sagebrush Restoration Project



















08.12.2009 09:58



