

# Simulating N<sub>2</sub>O emissions under different tillage systems of irrigated corn using RZ-SHAW model



Katrina Gillette<sup>a,\*</sup>, Liwang Ma<sup>b</sup>, Robert W. Malone<sup>a</sup>, Q.X. Fang<sup>c</sup>, Ardell D. Halvorson<sup>d</sup>, Jerry L. Hatfield<sup>a</sup>, L.R. Ahuja<sup>b</sup>

<sup>a</sup> USDA-ARS National Laboratory for Agriculture and the Environment, Ames, IA, USA

<sup>b</sup> USDA-ARS, 2150 Centre Ave. Bldg. D, Ste.200, USDA-ARS, Fort Collins, CO, USA

<sup>c</sup> Qingdao Agricultural University, Qingdao, China

<sup>d</sup> USDA-ARS, 2150 Centre Ave. Bldg. D, Ste.100, Fort Collins, CO, USA

## ARTICLE INFO

### Article history:

Received 17 February 2016

Received in revised form 3 August 2016

Accepted 30 August 2016

Available online 15 September 2016

### Keywords:

Ecosystem model

Nitrous oxide emissions

No-till

## ABSTRACT

Nitrous oxide (N<sub>2</sub>O) is a potent greenhouse gas (GHG), and agriculture is a global source of N<sub>2</sub>O emissions from soil fertility management. Yet emissions vary by agronomic practices and environmental factors that govern soil moisture and temperature. Ecosystem models are important tools to estimate N<sub>2</sub>O emissions by accounting for such variables, and models can strengthen field research. The objective of this study was to test RZ-SHAW predictions of crop production and N<sub>2</sub>O emissions from conventional till (CT) and no-till (NT) systems at high (HN) rate and low nitrogen input (LN) treatments in an irrigated corn (*Zea mays* L.) field in Colorado from 2003 to 2006 growing seasons. The model was calibrated using the HN-CT, and other treatments were used as validations. Additionally, the SHAW model was run in conjunction with RZWQM2 to account for differences in soil surface temperatures. Simulated crop yields were within 0.7 and 0.9% of measured yield for HN-NT and CT treatments, and 32 and 3% of measured yield for LN-NT and CT treatments, respectively. Spring soil temperatures were cooler by 2 °C in NT compared to CT, and were correctly simulated using RZ-SHAW coupled model. RZ-SHAW simulated N<sub>2</sub>O emissions were slightly under predicted by 0.10 (1.5%) and 0.56 (7.1%) kg N ha<sup>-1</sup> for HN-NT and HN-CT treatments, respectively. Results for LN treatments showed larger differences in simulated N<sub>2</sub>O emissions and were over predicted by 0.11 (16%) kg N ha<sup>-1</sup> in NT and under predicted by 0.29 (29%) g N ha<sup>-1</sup> day<sup>-1</sup> in CT. Annual emissions were in close agreement, with observed and simulated showing 12 and 10% lower N<sub>2</sub>O emissions from HN-NT than HN-CT, respectively. Cooler surface soil temperature and higher soil water content in the HN-NT treatment caused slower breakdown of crop residue and slightly more denitrification than HN-CT, resulting in lower N<sub>2</sub>O emissions in HN-NT. This is the first test of the newly added GHG component in RZ-SHAW under no-till management, and results suggest with some improvements the model could be applied to quantify N<sub>2</sub>O emissions from different management practices.

Published by Elsevier B.V.

## 1. Introduction

Nitrous oxide (N<sub>2</sub>O) is a greenhouse gas (GHG) with impending environmental effects because of its persistence in the atmosphere, high radiative feedback, unchecked emissions, and lack of

terrestrial sinks (Ravishankara et al., 2009). Agricultural is a global source of N<sub>2</sub>O emissions through the use of fertilizer and manure applications (Cavigelli et al., 2012). N<sub>2</sub>O is produced as one of the intermediate N gas byproducts due to the incomplete pathway of nitrification and denitrification (Parton et al., 2001). Conventional farming systems are dependent on synthetic N fertilizer for economic yield return, therefore, as global population rises and food demand increases emissions are expected to intensify (Keeney and Hatfield, 2008; Reay et al., 2012; Bouwman et al., 2013). One of the best predictors of N<sub>2</sub>O emissions is N fertilizer rate (Miller et al., 2010) which increases the availability of N for microbial transformation (Bouwman et al., 1993). Yet, emissions

*Abbreviations:* CT, conventional till; r<sup>2</sup>, coefficient of determination; GHG, greenhouse gas; GWP, global warming potential; MD, mean difference; NSME, Nash-Sutcliffe model efficiency; N<sub>2</sub>O, nitrous oxide; NO<sub>3</sub>-N, nitrate; NT, no-till; PCU, polymer coated urea; RMSE, root mean square error; RZWQM, root zone water quality model; SHAW, simultaneous heat and water.

\* Corresponding author.

E-mail address: [Katrina.Gillette@ars.usda.gov](mailto:Katrina.Gillette@ars.usda.gov) (K. Gillette).

vary by crop type, management, N fertilizer type and application timing, tillage, and irrigation practices (Mosier et al., 2006; Dobbie and Smith, 2003; Parkin and Kaspar, 2006). Emissions also vary by year because climate factors play a significant role in regulating soil moisture and temperature (Lesschen et al., 2011). Therefore strategies to mitigate N<sub>2</sub>O emissions are complex and results can be difficult to predict.

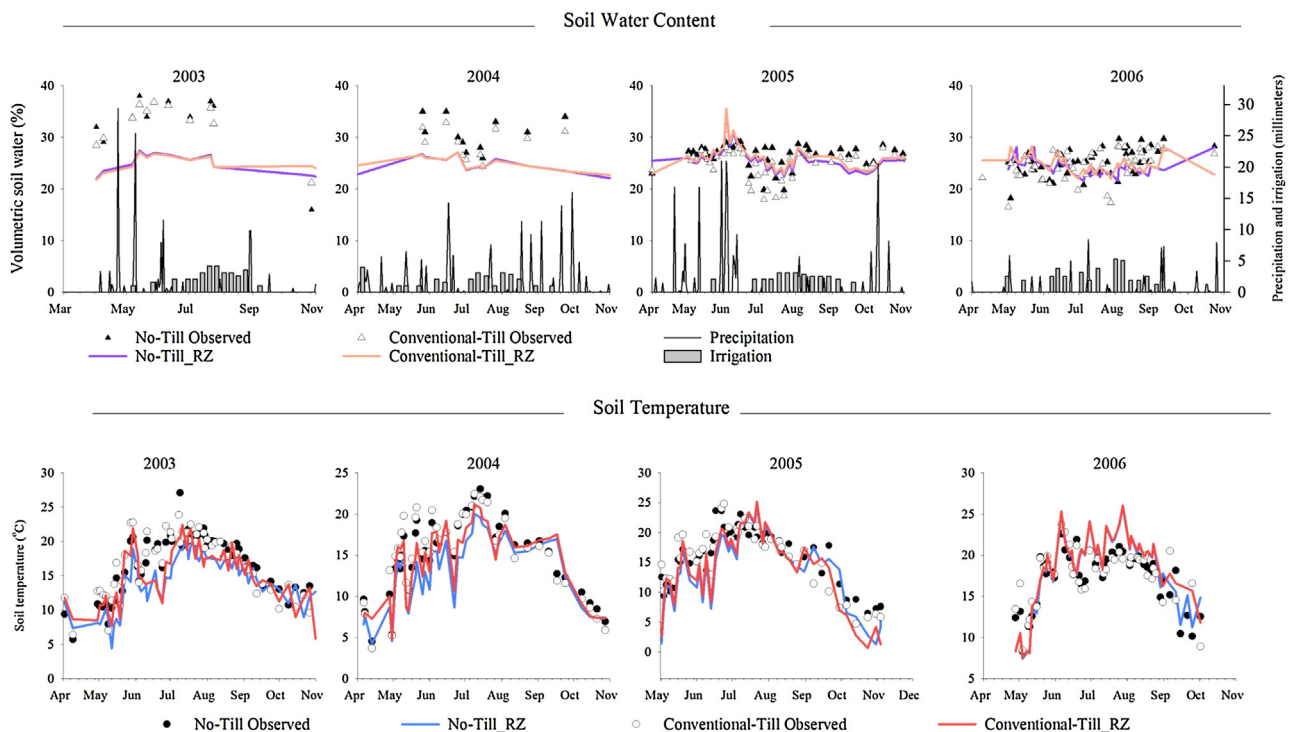
Consequently, it is critical for process based models to reflect an appropriate response in soil N<sub>2</sub>O emissions caused by environmental factors and management practices (Metivier et al., 2009; Wang et al., 2012; Fang et al., 2015). In general, process based models provide a systematic approach to understanding field research based on specific management (Ahuja and Hatfield, 2007) and allow comprehensive evaluation of multiple ecosystem processes (Zhang et al., 2013). Simulating the complexity of the primary ecological drivers affecting the soil N cycle and its interaction with management, have often yielded mixed results from ecosystem models regarding N<sub>2</sub>O emissions (Del Grosso et al., 2008; David et al., 2009; Bessou et al., 2010). Therefore, continuously testing and updating the current knowledge of N<sub>2</sub>O emissions kinetics is critical to improving models.

Root Zone Water Quality Model 2 (RZWQM2) is a comprehensive ecosystem model that simulates soil water, temperature and C/N dynamics as influenced by various agronomic management practices (Ahuja et al., 2000). RZWQM2 has been extensively applied to better understand the effects of soil water and N fertilizer management on crop yield and their interactions in the environment (Ma et al., 2007; Malone et al., 2007; Fang et al., 2008, 2010, 2012). Detailed input data for weather, soil physical, chemical and hydraulic information, and agronomic management are required to run the model (Ma et al., 2011; Malone et al., 2011), and Parameter Estimation Software (PEST) is included to support efficient user calibration (Ma et al., 2012b). Recently, to better quantify effects of alternative management practices and environmental impacts on nitrification and denitrification, Fang et al. (2015) modified RZWQM2 to simulate N<sub>2</sub>O emissions. Those

authors used algorithms for nitrification and denitrification as a function of soil water, temperature and soil N levels (Parton et al., 2001; Khalil et al., 2005; Bessou et al., 2010). However, their study was focused on conventional tillage only and the detailed surface energy balance component (simultaneous heat and water (SHAW)) was not used. The RZ-SHAW hybrid model adds the capability of simulating the effects of agriculture management on the surface energy balance (Flerchinger et al., 2000), and has shown improvement over the original RZWQM model in simulating the effects of crop residue on soil moisture and soil temperature (Kozak et al., 2007; Ma et al., 2012a).

No-till is a common agronomic soil conservation practice that reduces erosion and mitigates energy consumption in crop production (Halvorson et al., 2006). No-till management is a recognized and feasible soil conservation method for intensively managed systems such as corn (*Zea mays* L.) (Halvorson and Jantalia, 2011). There have been mixed findings however as to whether no-till reduces N<sub>2</sub>O emissions from cropping systems (Mosier et al., 2006; Liu et al., 2005). Tillage management affects soil temperature and soil water content and finally crop yield (Halvorson et al., 2008; Halvorson and Jantalia, 2011). Correctly predicting effects of tillage caused by changes in crop residue and soil hydraulic properties should improve model results for soil temperature (Ma et al., 2012a) and soil water content (Wang et al., 2010), and in turn improve simulated N<sub>2</sub>O emissions. Fang et al. (2014) showed that the RZ-SHAW was reasonable for simulating soil water content, soil temperature, evapotranspiration, surface energy balance as well as crop growth under conventional tillage conditions. The influence of no-till management on soil temperature and soil water content from surface residue cover and soil hydraulic properties has not been evaluated using RZ-SHAW (Ahuja et al., 2000).

The objective of this study was to test RZ-SHAW in predicting N<sub>2</sub>O emissions from no-tillage and conventional tillage management at two fertilizer application rates from an irrigated continuous corn (*Zea mays* L.) system in Colorado. This is a



**Fig. 1.** Observed and RZ-SHAW simulated soil water ( $\text{cm}^3 \text{cm}^{-3}$ ) (0–5 cm) and soil temperature (0–5 cm) during the 2003–2006 study period, along with millimeters of precipitation and irrigation water applications to field plots.

continuation of the study by Fang et al. (2015) to include effects of no-till management on N<sub>2</sub>O emissions and surface soil temperatures. Different from Fang et al. (2015), we used the RZ-SHAW version for both till and no-till, in which surface energy balance was used to improve soil surface temperature estimates, rather than assuming surface soil temperature equals air temperature.

## 2. Materials and methods

### 2.1. Field experiment

The experiment was conducted in clay loam soil (fine-loamy mixed, superactive mesic Aridic Haplustalfs) at the Agriculture Research Development and Education Center (ARDEC) (40°39'6"N, 104°59'57"W; 1555 m above sea level) near Fort Collins, Colorado (Halvorson et al., 2006). The annual precipitation was 21.8 cm, 24.2 cm, 29.6 cm, and 11.7 cm in 2003, 2004, 2005, and 2006. The soil had a pH of 7.71, organic matter content of 21 g kg<sup>-1</sup>, and a clay and silt contents of 33% and 27%, respectively (Halvorson et al., 2006). To evaluate management effects of conventional till (CT), no-till (NT) and nitrogen fertilizer rates in a continuous corn cropping system a study was established in 1999 (Halvorson et al., 2006). Prior to plot establishment the field was in conventionally tilled continuous corn for 6 years. In the CT corn system corn stalks were shredded in the fall and incorporated into the soil using a tandem disk; after disking, soil were turned using a moldboard plow at a depth of 25–30 cm. To prepare a seedbed in the spring, two operations of roller harrowing and two operations of land-leveling was conducted prior to land cultivation in the CT system. In the NT system, to facilitate planting, the corn planter was equipped with trash whippers to manage residue, otherwise corn was planted directly into the previous year's corn stalks. Corn was planted with 76 cm row spacing. Corn hybrids were changed each year based on hybrid availability, herbicide resistance and new yield potentials, but most hybrids had a 92–94 day relative maturity.

Four N fertilizer rates were designed with three replicates under the conventional and no-till systems. For this analysis however only the low N (0 kg N ha<sup>-1</sup>) and high N fertilizer rates were evaluated. In 2003 and 2004, the high N rate of 224 kg N ha<sup>-1</sup> in the form of urea ammonium nitrate (UAN) was injected to the top 5 cm of the soil profile prior to corn planting in late April of each year. In 2005 and 2006 a total of 246 kg N ha<sup>-1</sup> was applied in a split application. In 2005, 123 kg N ha<sup>-1</sup> was applied in a subsurface banded as UAN on 25 Apr., and 123 kg N ha<sup>-1</sup> of polymer-coated urea (PCU) was broadcast on 9 June. In 2006, the PCU was broadcast first on 17 May and urea was surface-band on 12 June at a rate of 123 kg N ha<sup>-1</sup>. A lateral moving sprinkler system was used to apply irrigation water to CT and NT on a weekly basis during the corn growing season. Total irrigation amounts were 41.6 cm, 36.21 cm, 38.77 cm, and 40.28 cm in 2003, 2004, 2005, and 2006, respectively. Precipitation and irrigation water applications for each year are presented in Fig. 1.

In September of each year corn biomass was determined by hand harvesting 15 whole corn plants from a specified area of each plot and plants were separated into grains, cobs, and stover to determine total mass. Corn grain yield was determined in late October by hand harvesting ears from an 11.6 m<sup>2</sup> area of each plot. Corn ears were shelled to determine grain and cob weight. Prior to planting in the spring, residue cover was estimated using the transect line method. Grain and crop residue were ground to pass a 150 μm sieve for N analysis and analyzed using a Carlo Era C/N analyzer (Haak Buchler instruments, Inc., Saddle Brook, NJ). See Halvorson et al. (2006) for more specifics of the field study.

Measurements of the soil-atmosphere exchange of N<sub>2</sub>O emissions were made throughout the corn growing seasons

(April–October) following the same procedures as Mosier et al. (2006), and were generally made two to three times per week using the vented non-steady state closed chambers technique (Hutchinson and Mosier, 1981; Livingston and Hutchinson, 1995). Rectangular chamber lids were fit onto water filled anchors that were set into the top 10 cm of soil, and gas samples inside the chamber were collected by syringe at time interval of 0-, 15- and 30- minutes. Upon trace gas collection, samples were injected into vacuum sealed 25 ml vials, and analyzed by gas chromatography. Nitrous oxide concentrations were analyzed using a fully automated gas chromatograph equipped with an electron capture detector (Varian 3800; Varian Inc., Palo Alto, Cali). Nitrous oxide flux rates were calculated based on linear or non-linear concentration increases in chamber head space (Hutchinson and Mosier, 1981; Livingston and Hutchinson, 1995). To estimate annual N<sub>2</sub>O emission, linear interpolations between sampling days were used as flux estimates for non-sampling days. Further detailed information regarding experimental design, trace gas measurements, and calculations can be found in Halvorson et al. (2008, 2010).

Surface soil water content and temperature measurements coincided with soil trace gas measurements and were measured using dielectric soil probes (Decagon Devices, Inc., Pullman WA., USA). Soil mineral N was measured from each treatment plot prior to planting in the spring and after harvest in the fall of each year from 2003 to 2006 and analyzed using a continuous flow analyzer (LACHAT Quick-Chem FIA + 8000 Series, Lachat Instrumentation) after extraction with 1 M KCl. One soil core was taken from the near center of each plot before planting and after harvest in the 0–180 cm of the soil profile each year from 2003 to 2006 for determination of gravimetric soil water content by oven drying soil subsamples at 105 °C.

### 2.2. N<sub>2</sub> emission algorithms

Prior to modifications of the new RZWQM GHG submodel made by Fang et al. (2015), nitrification and denitrification were simulated using a zero and first order kinetics, respectively (Ma et al., 2001). In order to comprehensively test the existing N<sub>2</sub>O algorithms Fang et al. (2015) modified RZWQM sub model to estimate N<sub>2</sub>O emissions based on soil water content, soil temperature, and soil N content. The algorithms presented below are currently being tested in RZWQM and are partially based on the general nitrification and denitrification models developed for DAYCENT as described by Parton et al. (2001) and Del Grosso et al. (2001). Specifically, the N<sub>2</sub>O emission (N<sub>2</sub>O<sub>nit</sub>) during nitrification (R<sub>nit</sub>) is from the DAYCENT model (using a fixed proportion of nitrification to estimate N<sub>2</sub>O emissions) and modified by a soil water factor (F<sub>SW\_Nit</sub>) of the oxygen availability effect on N<sub>2</sub>O emission during nitrification (Khalil et al., 2005) as the following:

$$N_2O_{nit} = Fr_{N_2O_{Nit}} \times F_{SW_{Nit}} \times R_{nit} \quad (1)$$

$$F_{SW_{Nit}} = \frac{0.4 \times WFPS - 1.04}{WFPS - 1.04} \quad (2)$$

where  $Fr_{N_2O_{Nit}}$  is a proportion of nitrification for N<sub>2</sub>O emissions, and a value of 0.02 was used as default in DAYCENT model (Parton et al., 2001; Del Grosso et al., 2001). WFPS is water filled pore space.

N<sub>2</sub>O emissions (N<sub>2</sub>O<sub>den</sub>) from denitrification (R<sub>den</sub>) is followed according to the DAYCENT model (Del Grosso et al., 2000) where ratios of N<sub>2</sub> to N<sub>2</sub>O and NO to N<sub>2</sub>O are estimated and modified based on soil nitrate-N content, soil respiration, and water filled

pore space (WFPS) as the following.

$$N_2O_{den} = Fr_{N_2O_{Den}} \times R_{den} \quad (3)$$

$$Fr_{N_2O_{Den}} = \frac{1}{1 + R_{NO-N_2O} + R_{N_2-N_2O}} \quad (4)$$

$$R_{NO-N_2O} = 4 + \frac{9 \times \tan^{-1}(0.75 \times \pi \times (10 \times D - 1.86))}{\pi} \quad (5)$$

$$R_{N_2-N_2O} = \max\left(0.16k1, k1 \times e^{\frac{-0.8[NO_3]}{[CO_2]}}\right) \times \max(0.1, 0.015 \times WFPS \times 100 - 0.32) \quad (6)$$

$$k1 = \max(1.5, 38.4 - 350 \times D) \quad (7)$$

where  $Fr_{N_2O_{Den}}$  is the fraction of denitrification for  $N_2O$  emissions;  $R_{NO-N_2O}$  is the ratio of NO to  $N_2O$ ;  $R_{N_2-N_2O}$  is the ratio of  $N_2$  to  $N_2O$ ;  $[NO_3]$  is soil nitrate-N content;  $[CO_2]$  is  $CO_2$  concentration;  $D$  is  $O_2$  diffusivity in soil (Davidson and Trumbore, 1995).

Since the above described  $N_2O$  emission simulation processes from DAYCENT model do not account for  $N_2O$  diffusion across soil depth, another modification is a diffusion factor ( $F_{depth-N_2O}$ ) of soil depth (depth, m) added to  $N_2O$  emission from both nitrification and denitrification based on Chatskikh et al. (2005) as following:

$$F_{depth-N_2O} = \max\left(0, \min\left(1, 1.0008 - 0.0343 \times \text{depth} - 3.186 \times \text{depth}^2\right)\right) \quad (8)$$

Based on the Eq. (3),  $N_2O$  from soil depth below 60 cm has no contribution to measured  $N_2O$  on the surface, which can be applicable in simulating  $N_2O$  emissions from deep soil layer in response to the irrigation or N fertilizer application methods (such as N application by injection and or subsurface irrigation).

### 2.3. Model input and SHAW model description

The simulation started in 1999 to initialize soil C and N and hydrology prior to the calibration. The calibration and testing period was from 2003 to 2006 and using the measured data of soil water, soil temperature, soil nitrate-N, crop yield, above ground biomass, and crop N uptake from the HN-CT treatment, while other N rate treatments in the CT system were used for validation as described by Fang et al. (2015). For this study, the calibrated RZWQM model from Fang et al. (2015) was used to further validate the experimental results from the high N (HN) and low nitrogen input (LN) treatments of the no-till system during the same measurement period of 2003–2006. Model input was based on the two corn systems described in the aforementioned field experiment. The only difference in management was tillage practices, in which no-till cropping systems were simulated with surface residue at the time of planting. Additionally, the SHAW model was run in conjunction with RZWQM2 to account for differences in soil surface temperatures due to surface residue cover (Ma et al., 2012a).

The SHAW model was originally developed by Flerchinger et al. (2000, 2009) and was incorporated into RZWQM to improve surface energy balance simulation (Li et al., 2012; Ma et al., 2012a; Fang et al., 2014). RZWQM provides SHAW soil water content, root distribution, soil evaporation, soil transpiration, leaf area index, and plant height at each time step. Then SHAW feeds back to RZWQM with soil ice content, updated soil water content due to ice and freezing, and soil temperature (Fang et al., 2014). Soil evaporation (AE) supplied by the RZWQM is used in SHAW to

compute the energy balance of the surface soil layer by forcing water vapor flux from the soil surface, and therefore latent heat flux, to equal the soil evaporation. Soil heat flow and temperature in the soil matrix, considering convective heat transfer by liquid and latent heat transfer by vapor for freezing soil is given by

$$C_s \frac{\partial T}{\partial t} - \rho_i L_f \frac{\partial \theta_i}{\partial t} = \frac{\partial}{\partial z} \left[ K_{t(s)} \frac{\partial T}{\partial z} \right] - \rho_l c_l \frac{\partial q_l T}{\partial z} - L_v \left( \frac{\partial q_v}{\partial z} + \frac{\partial \rho_v}{\partial t} \right) \quad (9)$$

where  $C_s$  and  $T$  are volumetric heat capacity ( $J kg^{-1} K^{-1}$ ) and temperature ( $^{\circ}C$ ) of the soil,  $\rho_i$  is density of ice ( $kg m^{-3}$ ),  $\theta_i$  is volumetric ice content ( $m^3 m^{-3}$ ),  $K_{t(s)}$  is soil thermal conductivity ( $W m^{-1} K^{-1}$ ),  $\rho_l$  is density of water,  $c_l$  is specific heat capacity of water ( $J kg^{-1} K^{-1}$ ),  $q_l$  is liquid water flux ( $m s^{-1}$ ),  $q_v$  is water vapor flux ( $kg m^{-2} s^{-1}$ ),  $L_f$  is latent heat of fusion ( $335,000 J/kg$ ) and  $\rho_v$  is vapor density ( $kg m^{-3}$ ) within the soil. The soil thermal conductivity and heat capacity are quantified using the theory of de Vries (1963). SHAW also uses a Newton-Raphson algorithm (Campbell, 1985) to solve finite difference expressions of the energy balance equation for soil temperature profiles. Soil surface temperature is solved through this iteration process by balancing radiation, sensible and latent heat fluxes from above with the soil heat flux ( $G$ ) into the soil.  $G$  is calculated by rearranging Eq. (9) as the sum of gradient and storage terms for a soil slab thickness ( $\Delta z_s, m$ ) as follows

$$G = \left[ \frac{K_{s(t)}}{\Delta z_s} + c_l q_l \right] (T_{s(t)} - \hat{T}_{z(t)}) - \frac{\Delta z_s}{2 \Delta t} \left[ C_s (T_{s(t)} - T_{s(t-\Delta t)}) - \rho_i L_f (\theta_{i(t)} - \theta_{i(t-\Delta t)}) \right] + L_v q_v \quad (10)$$

where  $\Delta t$  is time increment (s),  $T_{s(t)}$  is surface soil temperature at time  $t$  ( $^{\circ}C$ ),  $T_{s(t-\Delta t)}$  is previous surface soil temperature at time  $t-\Delta t$  ( $^{\circ}C$ ),  $\hat{T}_{z(t)}$  is soil temperature expected at soil slab lower boundary  $z$  at time  $t$  ( $^{\circ}C$ ). Other information on RZ-SHAW can be found in Fang et al. (2014).

### 2.4. Evaluation criteria

RZ-SHAW performance of simulated crop yield, biomass, crop N uptake, daily water content, soil temperature, and seasonal soil nitrate ( $NO_3-N$ ) was evaluated using the following statistics: root mean square error (RMSE), mean difference (MD), coefficient of determination ( $r^2$ ), and Nash-Sutcliffe model efficiency (NSME). The respective equations are shown below:

$$RMSE = \sqrt{\frac{1}{N} \sum_{i=1}^N P_i - O_i^2} \quad (11),$$

$$MD = \frac{\sum_{i=1}^N (P_i - O_i)}{N} \quad (12),$$

$$r^2 = 1 - \frac{\sum_{i=1}^N (P_i - O_i)^2}{\sum_{i=1}^N (P_i - O_i)^2 + \sum_{i=1}^N (P_i - O_a)^2} \quad (13),$$

$$NSME = \frac{\sum_{i=1}^N (P_i - O_i)^2}{\sum_{i=1}^N (O_i - O_a)^2} \quad (14)$$

Where  $P_i$  and  $O_i$  are paired simulated and observed results,  $O_a$  is the average of observed values over the 2003–2006 measurement periods, and  $N$  is the number of data pairs. The NSME was calculated to statistically compare observed and simulated cumulative  $N_2O$  emissions from 2003 to 2006. NSME is a statistical calculation used to normalize residual variance between observed and simulated data and evaluate how well the data fit on a 1:1 line comparison (Moriassi et al., 2007). Soil water content, soil temperature and  $N_2O$  emissions were averaged over the four year (2003–2006) during the early (April–June), mid (July–August), and late (September–October) growing season, and correlations ( $R^2$ ) between observed and simulated results are used to compared differences.

### 3. Results and discussion

#### 3.1. Tillage effects on yield and N uptake

Simulated crop yield during the four year simulation period (2003–2006) was in good agreement with the measured data for all HN and LN tillage treatments, with mean difference (MD) values of  $<0.9 \text{ Mg ha}^{-1}$ , root mean squared errors (RMSE) of  $<1.2 \text{ Mg ha}^{-1}$ , and Nash-Sutcliffe Model Efficiency (NMSE) values of  $>0.4$  (Table 1). Simulated aboveground biomass closely matched measured data as well, with corresponding to RMSE values of 1.7, 1.6, 1.5, and  $1.3 \text{ Mg ha}^{-1}$  for HN-NT, HN-CT, LN-NT, and LN-CT treatments, respectively (Table 1). Overall, yield and biomass were closely simulated to the measured data among the various tillage treatments, especially in that predicted crop production was slightly lower in the NT treatments compared to CT treatments. Grain N content was over predicted for all tillage treatments, which corresponded to negative NMSE values (Table 1). Thorp et al. (2008) also reported an over prediction of grain N uptake by 15 and 40% using RZWQM. Similar to grain N content, RZ-SHAW simulated plant N uptake was also over predicted, but was most exaggerated in the HN-NT and HN-CT treatments, with RMSE values of  $53.9$  and  $43.9 \text{ kg N ha}^{-1}$  and negative NMSE values of 3.7 and 3.5, respectively (Table 1). Fang et al. (unpublished) evaluated different grain N concentrations algorithms for modern hybrid corn which may improve comparisons between measured and modeled data.

#### 3.2. Soil water, temperature, and nitrate

Although irrigation management was similar between the NT and CT treatments, tillage practices created differences in soil

water content and soil temperature. Soil water content (0–10 cm) and soil temperature (0–5 cm) were similar among the N treatments within the two tillage systems, and were averaged across N treatments. In general, RZ-SHAW responded to field conditions in the NT and CT systems, but simulated soil water content was under predicted during 2003 and 2004 (Fig. 1). There was abnormally high soil water content ( $>0.36$ ) measured in the field during 2003 and 2004 caused by high precipitation events of  $>4.5 \text{ cm}$  during the early growing season (Liu et al., 2005; Halvorson et al., 2014). Simulated field capacity in the 0–10 cm layer of the soil is 0.334 in the calibrated model, but simulated soil water content ranged between 0.24 and 0.27 during the early growing seasons of 2003 and 2004 (Fig. 1), suggesting that movement of water through the soil profile was over predicted. The 1:1 comparison in Fig. 2a, demonstrates the tendency of the model to under predict surface soil water content (0–10 cm) on a seasonal basis, especially in the NT treatment, and illustrates the slightly drier soil conditions measured for the CT treatment (Fig. 2b).

Averaged over the four year study period surface soil water content (0–10 cm) was under predicted in the NT treatments, with residual mean differences (MD) of  $-0.02 \text{ cm}^3 \text{ cm}^{-3}$  and RMSE values of  $0.05 \text{ cm}^3 \text{ cm}^{-3}$  (Table 2). Root mean square errors (RMSE) values from 0.02 to  $0.05 \text{ cm}^3 \text{ cm}^{-3}$  have been used for simulated soil water content in model tests using RZWQM (Cameira et al., 2005). By excluding surface water content during the early 2003 growing season NMSE values are slightly improved from  $-0.14$  to  $-0.03$ . Our results are similar to Fang et al. (2015), who also reported near zero NMSE values of 0.09 and 0.06 for soil water content in the calibration and validation CT treatments, respectively. Predicted soil water content for 2003–2006 was closer to measurements from CT treatments, with a MD and RMSE values of  $-0.006$  and  $0.02 \text{ cm}^3 \text{ cm}^{-3}$  (Table 2).

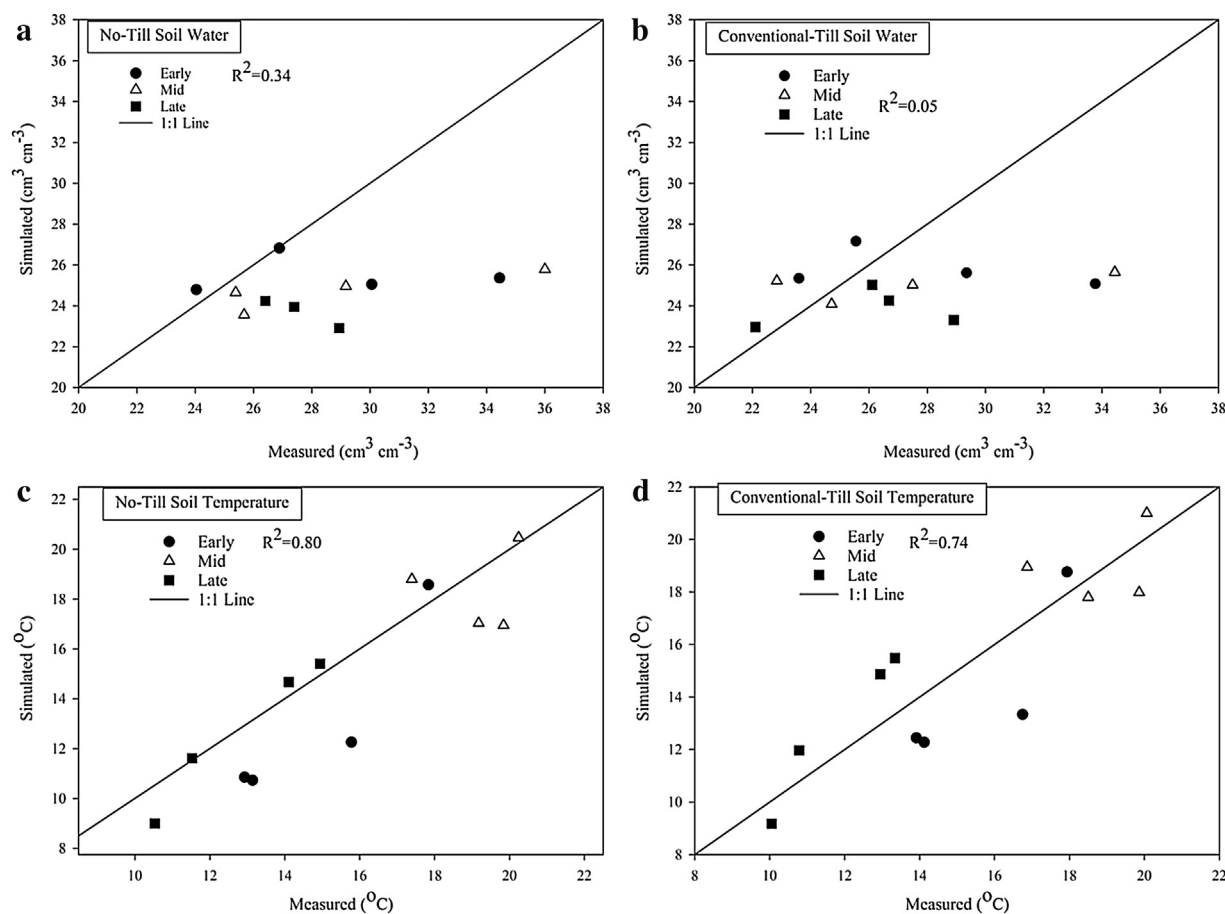
By excluding the high profile soil water storage of 57 cm measured during spring of 2003, statistical comparisons between observed and simulated water storage was improved from an initial NMSE value of  $-0.34$  (shown in Table 2) to 0.12. Averaged over the four year study period (2003–2006), water storage in the 0–180 cm soil profile was under predicted for NT treatment by nearly 4%, with MD and RMSE values of  $-1.8 \text{ cm}$  and  $2.8 \text{ cm}$ , respectively (Table 2). Fang et al. (2010) also reported a disagreement in stored soil water under wet soil conditions, with a RMSE value of  $5.4 \text{ cm}$ , a 15% difference between observed and predicted profile soil water from a winter wheat maize double cropping system in Northern China. There was a slight improvement (2–5%) using RZ-SHAW coupled model for simulated soil water storage compared to the initial analysis of the conventional

**Table 1**  
Statistical (MD, mean difference; RMSE, root mean square error) results between observed and RZ-SHAW simulated (RZ) crop growth variable of yield ( $\text{Mg ha}^{-1}$ ), biomass ( $\text{Mg ha}^{-1}$ ), grain N content ( $\text{kg N ha}^{-1}$ ) and Plant N uptake ( $\text{kg N ha}^{-1}$ ) for no-till (NT) and conventional-till (CT) high N rate (HN) rate and low N input (LN) from 2003 to 2006.

Tillage	N Rate	Yield $\text{Mg ha}^{-1}$						Biomass $\text{Mg ha}^{-1}$						Grain N $\text{kg N ha}^{-1}$						Plant N $\text{kg N ha}^{-1}$					
		Obs	RZ	MD	RMSE	$r^2$	NMSE	Obs	RZ	MD	RMSE	$r^2$	NMSE	Obs	RZ	MD	RMSE	$r^2$	NMSE	Obs	RZ	MD	RMSE	$r^2$	NMSE
NT	HN	9.1	9.2	0.1	0.9	0.3	0.5	17.5	16.8	-0.7	1.7	0.6	-0.9	125	164	39.9	43	0.5	-4.3	186	224	33.6	53.9	0.3	-3.7
	LN	4.2	5.5	0.9	1.2	0.5	0.6	10.0	11.1	1.7	1.5	0.3	-0.6	41	51	10.1	18	0.2	-3.7	63	73	10.0	16.0	0.3	-0.6
CT	HN	10.1	10.2	0.4	0.9	0.3	0.4	17.3	18.3	0.9	1.6	0.6	-0.2	130	172	42.6	63	0.6	-2.0	197	233	42.2	43.9	0.3	-3.5
	LN	5.5	5.7	0.2	0.4	0.5	0.7	11.3	11.6	0.3	1.3	0.8	0.7	53	57	3.6	14	0.2	-2.7	77	81	4.4	9.3	0.4	0.04

**Table 2**  
Statistical (MD, mean difference; RMSE, root mean square error; NSME, Nash-Sutcliffe model efficiency;  $r^2$ , coefficient of determination) results between observed and RZ-SHAW simulated soil water content at 10 cm, soil temperature at 5 cm, and profile soil water content in the 180 cm for no-till and conventional-till from 2003 to 2006.

Variable	Data Number	Depth (cm)	No-Till							Conventional-Till						
			Obs	RZ	MD	RMSE	NSME	$r^2$	Obs	RZ	MD	RMSE	NSME	$r^2$		
Soil water content ( $\text{cm}^3 \text{ cm}^{-3}$ )	236	10	0.27	0.25	-0.02	0.04	-0.14	0.31	0.26	0.25	-0.006	0.04	-0.02	0.21		
Soil temperature ( $^{\circ}\text{C}$ )	402	5	16.0	14.6	-1.4	3.12	0.54	0.75	16.3	15.4	-0.81	2.8	0.64	0.77		
Profile soil water (cΔm)	16	180	54.4	52.6	-1.8	3.3	-0.34	0.33	51.8	52.5	0.45	1.8	0.05	0.49		



**Fig. 2.** Observed and simulated soil water content ( $\text{cm}^3 \text{cm}^{-3}$ ) in the 0–10 cm soil profile (a and b), and soil temperatures (degrees Celsius) in the 0–5 cm soil profile (c and d) for no-till and conventional-till treatments during the early (April–June), mid (July–August), and late (September–October) growing season of 2003–2006.

tillage system by Fang et al. (2015), which lowered MD and RMSE values of  $-0.07$  cm and  $1.2$  cm, respectively (Table 2).

In contrast to soil water, predicted soil temperature was in better agreement with the observed data for both tillage systems (Fig. 2c, d). The greater surface cover provided by crop residue in the NT system typically retained  $1\text{--}2$  °C cooler soil temperatures in the early corn growing season and slightly warmer temperatures during the late season (Liu et al., 2005; Halvorson et al., 2006, 2008). Residue insulation effects on soil temperature from no-till management causes differences in seasonal soil temperature regimes compared to conventional tillage (Hayhoe et al., 1996; Dao, 1998; Halvorson et al., 2008). However, there were a few notable discrepancies between observed and simulated data. For example, NT soil temperature was under predicted during the early and mid-growing season of 2004 by around  $2$  °C, but over predicted by  $2$  °C for both tillage systems during the mid-2006 growing season (Fig. 1). Observed and simulated soil temperature had RMSE

values of  $3.1$  °C and  $2.8$  °C and MD values of  $-1.4$  and  $-0.9$  °C for NT and CT system, respectively (Table 2). Simulated soil temperature was improved in the CT treatment using the RZ-SHAW coupled model compared to Fang et al. (2015) who reported RMSE and MD values of  $3.6$  and  $-2.0$ , respectively. Closer simulation of soil temperature was accomplished using RZ-SHAW because air temperature is not assumed to be equivalent to the soil boundary layer. Furthermore, RZ-SHAW correctly predicted seasonal differences in soil temperature between NT and CT systems. However the insulating effect on soil temperature from surface residue during early (April–June) growing season was over predicted for three of the four years in NT treatments, with simulated soil temperature being  $1.0\text{--}1.8$  °C under predicted, as is demonstrated in the 1:1 comparisons in Fig. 2c.

Soil nitrate was under predicted by  $126$  kg N  $\text{ha}^{-1}$  in HN-NT and over predicted by  $32$  kg N  $\text{ha}^{-1}$  in HN-CT, with RMSE values of  $315$  and  $50$  kg N  $\text{ha}^{-1}$ , respectively (Table 3). Soil nitrate was under

**Table 3**

Observed and RZ-Shaw simulated soil nitrate-N content and change ( $\Delta$ ) in soil nitrate ( $\text{kg ha}^{-1}$ ) in the 180 cm soil profile for high N (HN) and low N input (LN) of no-till and conventional till treatments from 2003 to 2006, with statistics (MD, mean difference; RMSE, root mean square error;  $r^2$ , coefficient of determination; and Nash-Sutcliffe model efficiency NMSE) between observed and simulated data.

Tillage	N Rate	Soil $\text{NO}_3\text{-N}$ $\text{kg ha}^{-1}$						soil $\Delta \text{NO}_3\text{-N}$ $\text{kg ha}^{-1}$	
		Obs	RZ	MD	RMSE	$r^2$	NSME	Obs	RZ
NT	HN	350	273	$-126$	147.8	0.45	0.27	399	275
	LN	61	43	$-16.7$	18.9	0.37	0.36	31	$-10$
CT	HN	208	235	32	65	0.52	0.29	205	221
	LN	31	68	37	39	0.11	$-15.9$	$-15$	$-53$

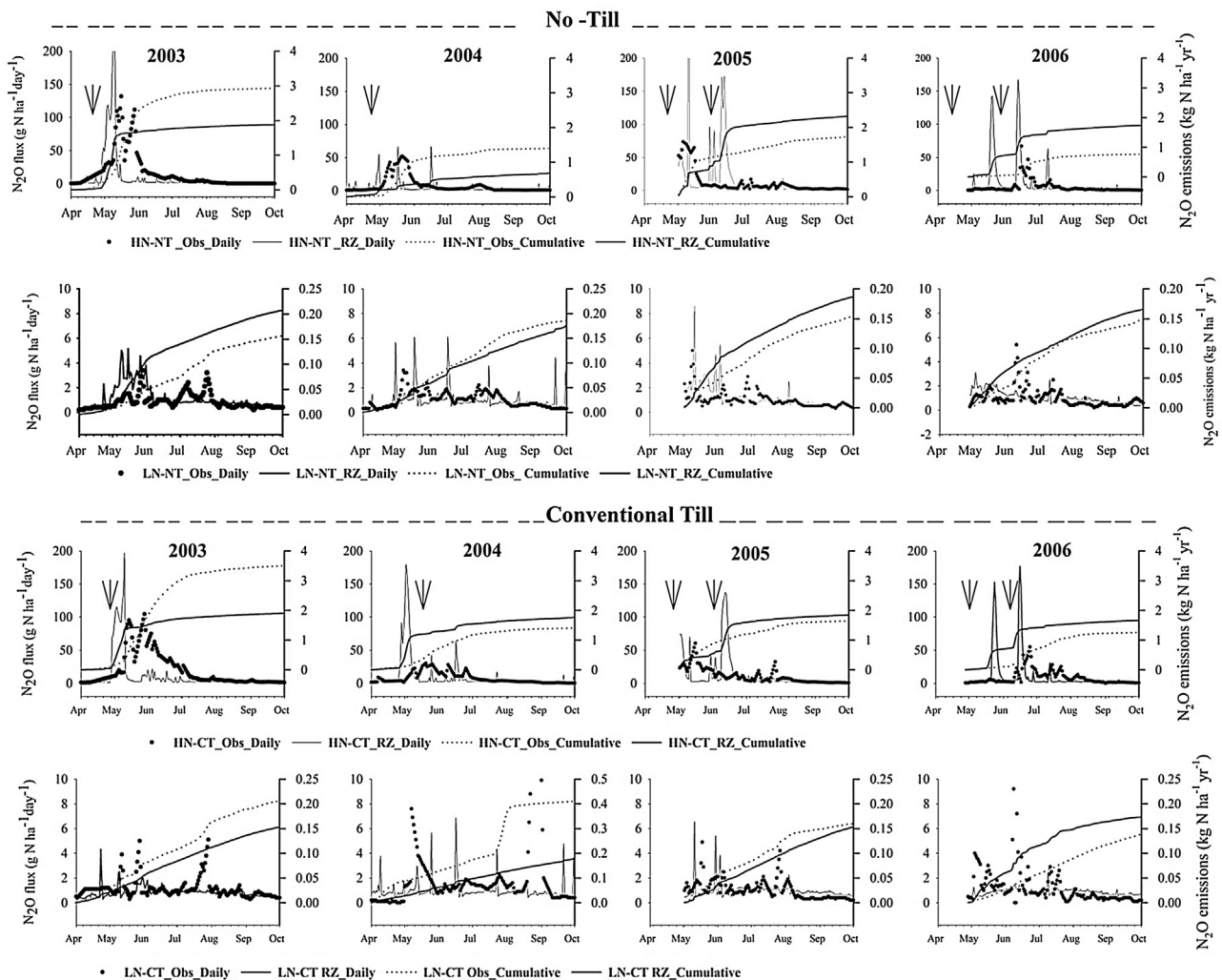
predicted in the LN-NT, with MD and RMSE values of 16.7 and 44 kg N ha<sup>-1</sup>, respectively. Soil nitrate was over predicted in the LN-CT treatment, with an MD of 37 kg N ha<sup>-1</sup> (Table 3). RZ-SHAW model accurately simulated net change ( $\Delta$ ) in soil NO<sub>3</sub>-N over the measurement period (2003–2006) by: (1) predicting a larger increase in soil NO<sub>3</sub> for HN-NT compared to HN-CT; (2) little change for the LN-NT and; (3) a net a loss in the LN-CT treatment (Table 3). No-till systems may be more efficient at conserving soil N due to a larger SOC pool compared to a conventionally tilled system (Follett and Schimel, 1989). Lower soil nitrate levels measured in CT soils were partly a result of higher plant N uptake and higher rates of N<sub>2</sub>O loss (Mutegi et al., 2010). Soil nitrate levels and crop N uptake were over predicted, but N<sub>2</sub>O emissions were under predicted in both CT treatments (see N<sub>2</sub>O discussion in Section 3.3), indicating that the soil N uptake routine may need further improvement (Fang et al., unpublished).

### 3.3. N<sub>2</sub>O Emissions

Observed and simulated daily N<sub>2</sub>O flux (g N ha day<sup>-1</sup>) are presented in Fig. 3 during 2003–2006 for each tillage treatment. High precipitation led to rapid and sporadic N<sub>2</sub>O losses immediately following N application in 2003 (Liu et al., 2005), leading to the highest emissions and demonstrating the influence of climate

on N<sub>2</sub>O emissions across years (Lesschen et al., 2011). The 2003 measurement period is also a good example of the requirement to simulate complex environmental interactions regulating microbial nitrification and denitrification (Bessou et al., 2010; Fang et al., 2015). Two N<sub>2</sub>O peaks were measured in 2003 from HN tillage treatments following the urea fertilizer applications (Fig. 3). There are often two N<sub>2</sub>O peaks after fertilizer application, the first being from nitrification during the transformation of urea to NH<sub>4</sub>-N; then the product of nitrification, NO<sub>3</sub>-N, provides the necessary substrate for N<sub>2</sub>O emissions from denitrification (Skiba and Smith, 2000). RZ-SHAW predicted two N<sub>2</sub>O peaks from HN fertilized treatments, however while the model correctly predicted an initial high surge of N<sub>2</sub>O, the duration was under estimated, resulting in under predicted cumulative emissions during 2003 (Fig. 3). Models have typically been unable to predict high N<sub>2</sub>O fluxes from intensively managed agricultural systems of temperate region (Beheydt et al., 2007; Del Grosso et al., 2008). For this analysis, simulated N<sub>2</sub>O emissions were likely improved by the more sophisticated sub-hourly accounting of daily soil water content in the RZ-SHAW model compared to the tipping bucket method simulated within the DAYCENT model as used by Del Grosso et al. (2008).

Lower N<sub>2</sub>O emissions were measured in both tillage systems following fertilizer application in 2004 compared to those



**Fig. 3.** Observed (closed circles) and RZ-SHAW (RZ) simulated (solid line) daily nitrous oxide flux (g N<sub>2</sub>O-N ha<sup>-1</sup> day<sup>-1</sup>) from high no-till (NT) and conventional-till (CT) high N (HN) and low N input (LN) treatments in irrigated corn from 2003 to 2006. Second Y axis is observed (dotted line) and RZ-SHAW (RZ) simulated (solid) cumulative N<sub>2</sub>O emissions (kg N<sub>2</sub>O-N ha<sup>-1</sup> yr<sup>-1</sup>). Arrows indicate fertilizer applications to HN tillage treatments.

measured in 2003 (Fig. 3). There was no significant tillage effect over the 2003 and 2004 study period (Liu et al., 2005). Instead of one low N<sub>2</sub>O peak that lasted for several weeks, as observed in the HN-NT treatment during 2004, RZ-SHAW simulated three small N<sub>2</sub>O peaks, resulting in an under prediction of annual emissions by 0.71 kg N<sub>2</sub>O-N ha<sup>-1</sup> (Fig. 3). Conversely, peak fluxes were slightly over-predicted in the HN-CT treatment and slightly under predicted in the HN-NT (Fig. 3), causing simulated emissions in the HN-CT to be twice as high as the HN-NT treatments during 2004. High N<sub>2</sub>O fluxes were measured in the LN-CT treatment during the late season of 2004, increasing annual emission to 0.5 kg N<sub>2</sub>O-N ha<sup>-1</sup> (Fig. 3). The failure to simulate these late season fluxes in LN-CT treatment caused emissions to be under predicted by approximately 50% in 2004 (Fig. 3).

Halvorson et al. (2008) evaluated N<sub>2</sub>O emissions from the CT and NT tillage treatments during 2005 and 2006 using a spilt application of conventional (UAN in 2005 and urea in 2006) and an enhanced efficiency (polymer-coated urea (PCU)) fertilizer for high N rate treatments. Observed and simulated emissions ranged between 0.2 and 0.15 kg N<sub>2</sub>O ha<sup>-1</sup> yr<sup>-1</sup> in the LN tillage treatments during 2005 and 2006 (Fig. 3). In the field experiment there was a significant N rate by year interaction for the HN treatments caused by significantly higher emissions in 2005 than in 2006. Field measurements showed similar emissions between HN-CT and HN-NT during 2005, totaling 1.6 and 1.75 kg N<sub>2</sub>O-N ha<sup>-1</sup>, but the HN-CT treatment had higher emissions than HN-NT treatment during 2006, that totaled 1.25 and 0.75 kg N<sub>2</sub>O-N ha<sup>-1</sup>, respectively (Halvorson et al., 2008). In the field, the PCU fertilizer applications did not result in rapid N<sub>2</sub>O fluxes from either HN treatment during 2005 or 2006 (Fig. 3). The poly-coated technology is designed to release more N as soil temperature increases, slowing the release of urea and inhibiting N<sub>2</sub>O fluxes by limiting N availability to microbial processes (Halvorson et al., 2008; Olson-Rutz et al., 2011; Halvorson et al., 2014). The RZWQM model however does not simulate slow N release mechanisms from enhanced efficiency fertilizers such as those formulated in the PCU fertilizer; therefore the low fluxes from the HN-NT treatment were over predicted especially after the first fertilization 2006 simulation period, where predicted emissions were nearly twice as high as the observed.

Cumulative emissions during the four years, 2003–2006, fell within the mean standard errors of the three field replicates over the four year measurement period for all treatments (Table 4). Field measurements indicated HN-NT treatments had slightly lower N<sub>2</sub>O emissions (12%) than the HN-CT treatment. RZ-SHAW simulated N<sub>2</sub>O emissions were slightly under predicted by 0.10 (1.5%) and 0.56 (7.1%) kg N ha<sup>-1</sup> for HN-NT and HN-CT treatments, respectively, with corresponding NSME values of 0.58 and 0.69. Overall, N<sub>2</sub>O fluxes in response to tillage were satisfactorily simulated, especially in that RZ-SHAW predicted slightly lower

emissions (10%) from the HN-NT treatment compared to HN-CT treatment (Table 4). However while simulated N<sub>2</sub>O emissions were similar to observed in HN-NT treatment, emissions were under predicted during 2003 and 2004 and over predicted during 2005 and 2006 (see HN-NT Fig. 3). Simulated N<sub>2</sub>O emissions were over predicted in the LN-NT treatment by 0.11 (16%) kg N ha<sup>-1</sup>, with a corresponding NSME value of 0.87. RZ-SHAW under predicted emissions by 0.29 (29%) kg N ha<sup>-1</sup> in the LN-CT treatment (Table 4), resulting in a slightly lower NSME value of 0.5. However, this was mostly an effect of under predicted emissions during the late 2004 growing season. By excluding the late 2004 measurement period, simulated emissions were within 1.3% of the observed, and increased the NSME value to 0.97 for the LN-CT treatment.

In order to demonstrate the capability of the RZ-SHAW model to predict seasonal N<sub>2</sub>O emission trends throughout the growing season, seasonal N<sub>2</sub>O emissions (early (April–June), mid (July–August), and late (September–October)) were averaged for each treatment (Fig. 4). Differences between measured and simulated early-season N<sub>2</sub>O emissions for HN-NT treatments are notable (Fig. 4a), but importantly high standard errors are often associated with high N<sub>2</sub>O fluxes from field measurements (Halvorson et al., 2008). There were strong positive correlations (R<sup>2</sup>) between measured and simulated for seasonal N<sub>2</sub>O emissions in the HN tillage treatments (~0.6), and slightly lower correlations for LN treatments (~0.3), see Fig. 4. Theoretically process based models should be able to predict seasonal variability of N<sub>2</sub>O emissions (Cai et al., 2003). Yet previous efforts to simulate emissions from these field plots using DAYCENT resulted in a 50% over prediction of N<sub>2</sub>O emissions caused by high simulated mineralization rates during the latter part of the growing season (Del Grosso et al., 2008).

#### 3.4. Emission factors and GHG intensity

Observed and simulated emission factors (EF) [(N<sub>2</sub>O emission at N rate – N<sub>2</sub>O emission at zero N rate)/N rate] were 0.66 and 0.65% for HN-NT and 0.75 and 0.70% for HN-CT treatments, respectively. The IPCC Tier I methodology uses an EF of 1% for applied fertilizer (IPCC, 2006). Because the Tier I approach does not account for spatial and temporal variation of climate and soil (Lesschen et al., 2011), N<sub>2</sub>O emissions would be over predicted by 30 and 20% using the Tier I approach for HN-NT and HN-CT, respectively. Contrary to the Tier I approach, we show that using a validated ecosystem model in conjunction with measured data improves the reliability of simulated N<sub>2</sub>O emission, as suggested by IPCC Tier III methodology (IPCC, 2006; Metivier et al., 2009).

Greenhouse gas (GHG) intensity provides an estimate of emissions per unit of yield (Mg ha<sup>-1</sup>), and are converted to kg of carbon dioxide equivalents (CO<sub>2</sub>e) based on the 100 year global warming potential of 298 for N<sub>2</sub>O (Eggleston et al., 2006). Measured GHG intensities were 54.8 and 57.8 kg CO<sub>2</sub>e Mg grain<sup>-1</sup>

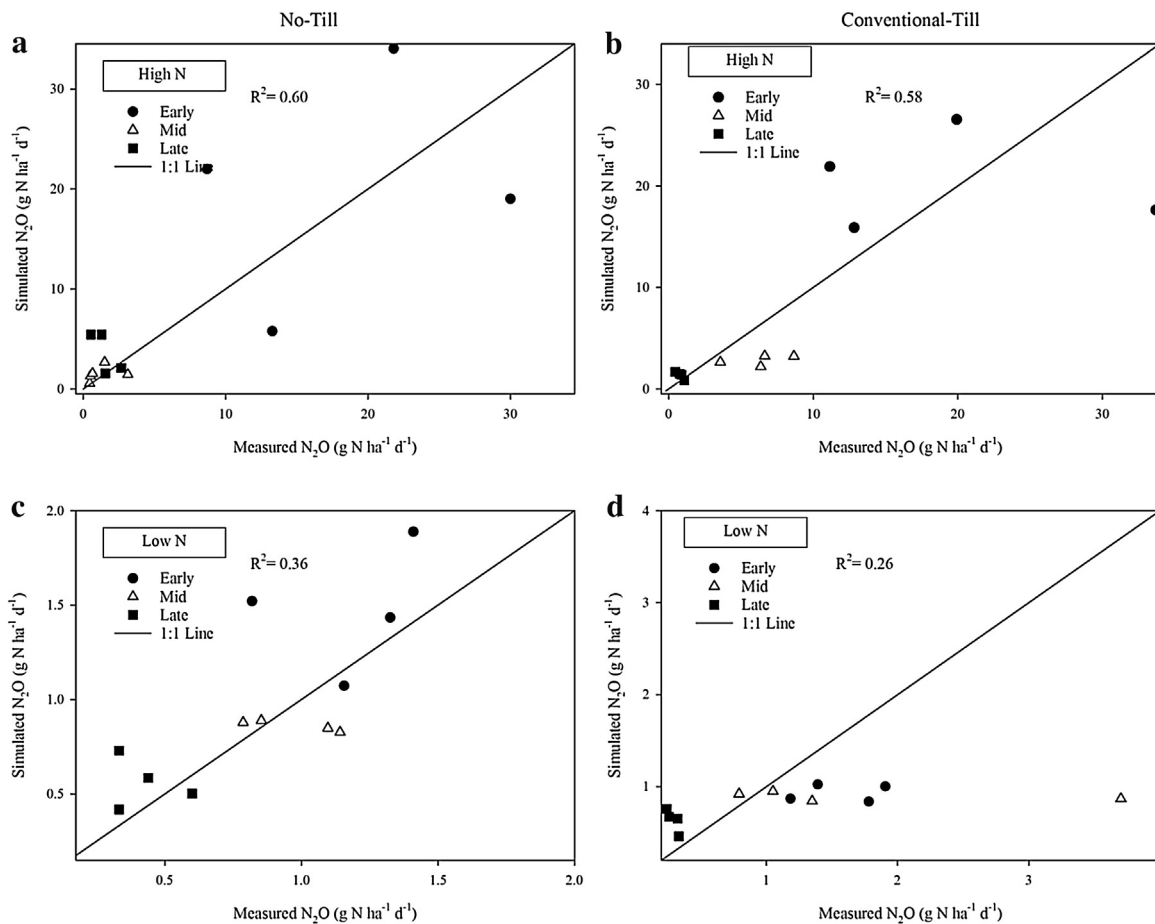
**Table 4**

Observed and RZ-SHAW simulated N<sub>2</sub>O emissions (kg N ha<sup>-1</sup>) during the four year study period (2003–2006) from no-till (NT) and conventional-till (CT) high N (HN) and low N input (LN) treatments. Comparisons between observed and RZ-SHAW simulated N<sub>2</sub>O emissions using Nash-Sutcliffe model efficiency (NMSE); r<sup>2</sup>, coefficient of determination; (MD, mean difference; RMSE, root mean square error. Greenhouse gas (GHG) intensity is calculated from observed and simulated N<sub>2</sub>O emissions (converted into carbon dioxide equivalent (CO<sub>2</sub>e) by using Global warming potential of 298) and divided by the respective grain yields (Mg) over the 2003–2006 study period.

Tillage	N Rate	N <sub>2</sub> O kg N ha <sup>-1</sup> yr <sup>-1</sup>							GHG intensity CO <sub>2</sub> e Mg grain yield <sup>-1</sup>	
		Obs	ste*	RZ-SHAW	MD	RMSE	r <sup>2</sup>	NMSE	Obs	RZ-SHAW
NT	HN	6.88	5.67	6.78	0.05	1.85	0.77	0.58	54.8	54.5
	LN	0.62	0.70	0.79	-0.05	0.20	0.52	0.87	11.9	10.7
CT	HN	7.85	4.91	7.29	0.28	1.98	0.50	0.69	57.8	53.0
	LN	0.98	0.80	0.69	0.15	0.31	0.50	0.51	13.1	8.9

Mean standard error (ste)\* of three replications from daily N<sub>2</sub>O flux during 2003–2006.





**Fig. 4.** Observed and simulated seasonal  $\text{N}_2\text{O}$  emissions ( $\text{g N ha}^{-1} \text{ day}^{-1}$ ) from no-till and conventional-till high N (HN) (a and b) and low input (LN) treatments (c and d) during the early (April–June), mid (July–August), and late (September–October) growing season of 2003–2006.

for HN-NT and HN-CT treatments, and 11.9 and 13.1  $\text{kg CO}_2\text{e Mg grain}^{-1}$  for LN-NT and LN-CT treatments, respectively (Table 4). Based on simulated crop yield and  $\text{N}_2\text{O}$  emissions, there was less than a 1% difference between observed and simulated GHG intensity for HN-NT, and less than 10% difference for the LN-NT and HN-CT (Table 4). There was a larger disagreement between observed and simulated GHG intensity for LN-CT which under predicted GHG intensity by 32%, caused by an under prediction of  $\text{N}_2\text{O}$  emissions and an over prediction of crop yield. Our analyses however demonstrate the potential of using RZ-SHAW to investigate the multifaceted challenges between field management and environmental impacts.

### 3.5. Mineralization and denitrification

The soil contained 2.1% soil organic matter (SOM) (Halvorson et al., 2006). For every 1% of SOM approximately 35  $\text{kg N ha}^{-1}$  is mineralized per growing season (Vigil et al., 2002). Simulated

mineralization from 2003 to 2006 was approximately 60  $\text{kg N ha}^{-1} \text{ yr}^{-1}$  for the LN tillage treatments, and is therefore within the range of the expected value (Table 5). To verify the higher mineralization rates from HN treatments, a partial soil N balance (Karlen et al., 1998) can be calculated by assuming the conservation of mass:

$$\sum \text{Ninput} - \sum \text{Noutput} - \Delta \text{soilN} = \text{residualsoilN} \quad (15)$$

Higher biomass N content in the HN treatments increases availability of mineralizable N compared to LN treatments; here we estimate that about 45  $\text{kg N ha}^{-1} \text{ yr}^{-1}$  more is cycled in the HN treatments. Importantly, RZ-SHAW predicted higher mineralization rates (12  $\text{kg N ha}^{-1}$ ) in the HN-CT treatments than in the HN-NT treatments (Table 5). That is, the incorporation of surface residue increased organic inputs by 50% and increased mineralization rates by over 10% in HN-CT compared to HN-NT (Table 5). These suggested differences in N cycling were an important factor affecting  $\text{N}_2\text{O}$  emissions between tillage systems. Limited mixing of surface residue and soil in NT systems may slow decomposition

**Table 5**  
Simulated partial N budget for no-till (NT) and conventional till (CT) high N (HN) and low N (LN) rate treatments (mean values from 2003 to 2006).

Tillage	N Rate	$\text{N}_2\text{O}$ from Nitrification $\text{kg N ha}^{-1}$	Denitrification $\text{kg N ha}^{-1}$	Mineralization $\text{kg N ha}^{-1}$	$\text{N}_x\text{O}$ $\text{N kg N ha}^{-1}$
NT	HN	1.77	21.6	102.3	1.40
	LN	0.29	0.95	63.4	0.21
CT	HN	1.82	19.5	114.9	2.0
	LN	0.28	0.86	59.8	0.29

rates, causing differences in N cycling between tillage systems and influencing soil N<sub>2</sub>O emissions (Follett and Schimel, 1989; Quemada and Cabrera, 1997). Crop simulation models that can account for differences in N cycling through residue management may help improve estimates of N<sub>2</sub>O emissions (Delgado et al., 2010).

Biological nitrification was the main parameter adjusted in the new RZWQM2-GHG simulation component (Fang et al., 2015), as this was the primary pathway for N<sub>2</sub>O emission in this semi-arid system (Mosier et al., 1996). RZ-SHAW predicted that 90–95% of N<sub>2</sub>O was emitted through microbial nitrification, and that HN-NT had nearly 10% higher denitrification rates (Table 5). At these field plots, Liu et al. (2005) measured lower nitric oxide (NO) emissions from NT fertilized plots, caused by wetter and less aerated soil conditions which increased microbial denitrification. Gas diffusion is slowed in soils with higher soil water content or greater microporosity, enabling NO to be further reduced to N<sub>2</sub>O (Conrad, 1996; McTaggart et al., 2002). Also, RZ-SHAW predicted 30% higher aerobic microbial activity in CT compared to NT treatments (data not shown). Soil aggregates are reconsolidated within the RZWQM2 model due to fewer soil disturbances under NT management. Soil disturbance from tillage management can alter the functional groups of microbial communities causing differences in denitrification rates (Cavigelli and Robertson, 2001). Ecosystem crop models enhance field research by offering a comprehensive evaluation of multiple biological processes (Ahuja and Hatfield, 2007; Zhang et al., 2013), and can lead to new investigative research (Oreskes et al., 1994). Model results presented here have shown that tillage management caused differences in N cycling and microbial communities between NT and CT systems.

#### 4. Conclusion

This study is the first evaluation of the newly added GHG component to RZ-SHAW under different tillage systems. RZ-SHAW closely predicted crop yield and biomass over the four year study period (2003–2006) for all tillage treatments. By accounting for residue insulation effects on the soil surface, lower early season surface soil temperatures were correctly predicted in NT compared to CT treatments. However, there were several discrepancies between observed and simulated daily N<sub>2</sub>O fluxes. For example, the initial surge of simulated N<sub>2</sub>O flux was too high and the duration was too short during the 2003 simulation period, resulting in an under prediction of N<sub>2</sub>O for HN treatments. The model failed to simulate the slightly higher annual emissions from LN-CT compared to LN-NT, though this was primarily caused by high N<sub>2</sub>O measured during the late 2004 growing season. Emissions from HN-NT were over predicted in 2005 and 2006 when enhanced efficiency fertilizers were applied as the respective second and first treatment applications. Nevertheless, the strong correlations between measured and simulated N<sub>2</sub>O emissions indicate the model made accurate predictions on a seasonal basis. Observed and simulated cumulative N<sub>2</sub>O emissions from 2003 to 2006 were also in close agreement, with 12 and 10% lower emissions from HN-NT compared to HN-CT, respectively. Model output showed differences in N cycling between tillage treatments, indicating lower organic residue inputs and higher denitrification rates lowered simulated N<sub>2</sub>O emissions in HN-NT. Overall, RZ-SHAW simulated N<sub>2</sub>O emissions were reasonable between the different N and tillage treatments of this irrigated corn system, and may be applicable to other agricultural practices within the region. Deserving further attention is the slowed diffusion rates of urea hydrolysis when using enhanced efficiency fertilizers within RZ-SHAW model, as this would add model support to N<sub>2</sub>O mitigation strategies.

#### References

- Ahuja, L.R., Hatfield, J.L., 2007. Integrating soil and crop research with system models in the Midwest USA: purpose and overview of the Special Issue. *Geoderma* 140 (3), 217–222.
- Ahuja, L.R., Rojas, K.W., Hanson, J.D., Shaffer, M.J., Ma, L., 2000. The Root Zone Water Quality Model. Water Resources Publications, Highlands Ranch Colo.
- Beheydt, D., Boeckx, P., Sleutel, S., Lic, C., Van Cleemput, O., 2007. Validation of DNDC for 22 long term N<sub>2</sub>O field emission measurements. *Atmos. Environ.* 41, 6196–6211.
- Bessou, C., Mary, B., Leonard, J., Roussel, M., Grehan, E., Gabrielle, B., 2010. Modelling soil compaction impacts on nitrous oxide emissions in arable fields. *Eur. J. Soil Sci.* 61, 348–363.
- Bouwman, A.F., Fung, I., Matthews, E., John, J., 1993. Global analysis of the potential for N<sub>2</sub>O production in the natural soils. *Glob. Biogeochem.* 7 (3), 557–597.
- Bouwman, A.F., Beusen, A.H.W., Griffioen, J., Van Groenigen, J.W., Hefting, M.M., Oenema, O., Van Puijenbroek, P.J.T.M., Seitzinger, S., Slomp, C.P., Stehfest, E., 2013. Global trends and uncertainties in terrestrial denitrification and N<sub>2</sub>O emissions. *Philos. Trans. R. Soc. Lond. Ser. B Biol. Sci.* 368, 1–11.
- Cai, Z., Sawamoto, T., Li, C., Kang, G., Boonjawat, J., Mosier, A., 2003. Field evaluation of the DNDC model for greenhouse gas emissions in East Asian cropping systems. *Glob. Biogeochem. Cycles* 17, 1107.
- Cameira, M.R., Fernando, R.M., Ahuja, L., Pereira, L., 2005. Simulating the fate of water in field soil-crop environment. *J. Hydrol.* 315, 1–24.
- Campbell, G.S., 1985. *Soil Physics With BASIC: Transport Models for Soil-plant Systems*. Elsevier, Amsterdam, pp. 150.
- Cavigelli, M., Robertson, G., 2001. Role of denitrifier diversity in rates of nitrous oxide consumption in a terrestrial ecosystem. *Soil Biol. Biochem.* 33, 297–310.
- Cavigelli, M.A., Del Grosso, S.J., Leibig, M.A., Snyder, C.S., Fixen, P.E., Venterea, R.T., Leytem, A.B., McLain, J.E., Watts, D.F., 2012. US agricultural nitrous oxide emissions: context, status, and trends. *Front. Ecol. Environ.* 537–546.
- Chatskikh, D., Olesen, J., Berntsen, J., Regina, K., Yamulki, S., 2005. Simulation of effects of soils, climate and management on N<sub>2</sub>O emission from grasslands. *Biogeochemistry* 76, 395–419.
- Conrad, R., 1996. Soil microorganisms as controllers of atmospheric trace gases (H<sub>2</sub>, CO<sub>2</sub>, CH<sub>4</sub>, OCS, N<sub>2</sub>O, and NO). *Microbiol. Rev.* 600–640.
- Dao, T.H., 1998. Tillage and crop residue effects on carbon dioxide evolution and carbon storage in a Paleustoll. *Soil Sci. Soc. Am. J.* 62, 250–256.
- David, M., Del Grosso, S.J., Hu, X., Marshal, E.P., McIsaac, G.F., Parton, W.J., Tonitto, C., Youssef, M.A., 2009. Modeling denitrification in a tile drained, corn and soybean agroecosystem of Illinois, USA. *Biogeochemistry* 93, 7–30.
- de Vries, D.A., 1963. Thermal properties of soils. In: van Wijk, W.R. (Ed.), *Physics of Plant Environment*. North-Holland Publishing Company, Amsterdam, pp. 210–235.
- Davidson, E.A., Trumbore, S.E., 1995. Gas diffusivity and production of CO<sub>2</sub> in deep soils of the eastern Amazon. *Tellus B* 47, 550–565.
- Del Grosso, S.J., Parton, W.J., Mosier, A.R., Ojima, D.S., Kulmala, A.E., Phongpan, S., 2000. General model for N<sub>2</sub>O and N<sub>2</sub> gas emissions from soils due to denitrification. *Glob. Biogeochem. Cycles* 14, 1045–1060.
- Del Grosso, S.J., Parton, W.J., Halvorson, A.D., 2008. Testing DAYCENT model simulations of corn yields and nitrous oxide emissions in irrigated systems in Colorado. *J. Environ. Qual.* 37, 1383–1389.
- Delgado, J.A., Del Grosso, S.J., Ogle, S.M., 2010. 15N isotopic crop residue cycling studies and modelling suggest that IPCC methodologies to assess residue contribution to N<sub>2</sub>O-N emission should be reevaluated. *Nutr. Cycl. Agroecosyst.* 86, 383–390.
- Dobbie, K.E., Smith, K.A., 2003. Impact of different forms of N fertilizer on N<sub>2</sub>O emission from intensive grassland. *Nutr. Cycl.* 67, 37–46.
- Eggleston, S., Buendia, L., Miwa, K., Ngara, T., Tanabe, K., 2006. *IPCC Guidelines for National Greenhouse Gas Inventories*. Intergovernmental Panel on Climate Change.
- Fang, Q.X., Ma, L., Yu, Q., Malone, R.W., Saseendran, S.A., Ahuja, L.R., 2008. Modeling nitrogen and water management effects in a wheat-maize double cropping system. *J. Environ. Qual.* 37 (6), 2232–2242.
- Fang, Q.X., Ma, L., Yu, Q., Ahuja, L.R., Malone, R.W., Hoogenboom, G., 2010. Irrigation strategies to improve the water use efficiency of wheat-maize double cropping systems in North China Plain. *Agric. Water Manage.* 97, 1165.
- Fang, Q.X., Malone, R.W., Ma, L., Jaynes, D.B., Thorpe, K.R., Green, T.R., Ahuja, L.R., 2012. Modeling the effects of controlled drainage, N rate and weather on nitrate loss to subsurface drainage. *Agric. Water Manage.* 103, 150–161.
- Fang, Q.X., Ma, L., Flerchinger, G.N., Qi, Z., Ahuja, L., Xing, H.T., Yu, Q., 2014. Modeling evapotranspiration and energy balance in a wheat-maize cropping system using the revised RZ-SHAW model. *Agric. For. Meteorol.* 194, 218–229.
- Fang, Q.X., Ma, L., Halvorson, A.D., Malone, R.W., Ahuja, L.R., Del Grosso, S.J., 2015. Evaluating four nitrous oxide emission algorithms in response to N rate on an irrigated corn field. *Environ. Model. Software* 72, 56–70.
- Flerchinger, G.N., Aiken, R.M., Rojas, K.W., Ahuja, L.R., 2000. Development of the Root Zone Water Quality Model (RZWQM) for over-winter conditions. *Trans. ASAE* 43 (1), 59–68.
- Flerchinger, G.N., Xiao, W., Sauer, T.J., Yu, Q., 2009. Simulation of within canopy radiation exchange. *NJAS Wageningen J. Life Sci.* 57 (1), 5–15.
- Follett, R.F., Schimel, D.S., 1989. Effect of tillage practices on microbial biomass dynamics. *Soil Sci. Soc. Am. J.* 53 (4), 1091–1096.
- Halvorson, A.D., Jantalia, C.P., 2011. Nitrogen fertilization effects on irrigation no-till corn production and soil carbon nitrogen. *Agron. J.* 103, 1423–1431.

- Halvorson, A.D., Mosier, A.R., Reule, C.A., Bausch, W.C., 2006. Nitrogen and tillage effects on irrigated continuous corn yields. *Agron. J.* 98, 63–71.
- Halvorson, A.D., Del Grosso, S.J., Reule, C.A., 2008. Nitrogen, tillage, and crop rotation effects from irrigated cropping systems. *J. Environ. Qual.* 37, 1337–1344.
- Halvorson, Ardell D., Del Grosso, S.J., Alluvione, F., 2010. Tillage and inorganic nitrogen source effects on nitrous oxide emissions from irrigated cropping systems. *Soil Sci. Soc. Am. J.* 74 (2), 436–445.
- Halvorson, A.D., Snyder, C.S., Blaylock, A.D., Del Grosso, S.J., 2014. Enhanced-efficiency nitrogen fertilizers: potential role in nitrous oxide emission mitigation. *Agron. J.* 106, 715e722.
- Hayhoe, H.N., Dwyer, L.M., Stewart, D.W., White, R.P., Culley, J.L.B., 1996. Tillage, hybrid and thermal factors in corn establishment in cool soils. *Soil Till. Res.* 40 (1–2), 39–54.
- Hutchinson, G.L., Mosier, A.R., 1981. Improved soil cover method for field measurement of nitrous oxide fluxes. *Soil Sci. Soc. Am. J.* 45, 311–316.
- IPCC (Intergovernmental Panel on Climate Change), 2006. Prepared by the National Greenhouse Gas Inventories Programme. In: Eggleston, H.S., Buendia, L., Miwa, K., Ngara, T., Tanabe, K. (Eds.), *IPCC Guidelines for National Greenhouse Gas Inventories*. Published: IGES, Japan.
- Karlen, D.L., Kramer, L.A., Logsdon, S.D., 1998. Field-scale nitrogen balances associated with long-term continuous corn production. *Agron. J.* 90, 644–650.
- Keeney, D.R., Hatfield, J.L., 2008. Chapter 1. The nitrogen cycle, historical perspective, and current and potential future concerns. In: Hatfield, J.L., Follett, R.F. (Eds.), *Nitrogen in the Environment: Sources, Problems, and Management*. 2nd ed. Elsevier, pp. 1–18.
- Khalil, K., Renault, P., Guerin, N., Mary, B., 2005. Modelling denitrification including the dynamics of denitrifiers and their progressing ability to reduce nitrous oxide: comparison with batch experiments. *Eur. J. Soil Sci.* 56, 491–504.
- Kozak, J.A., Aiken, R.M., Flerchinger, G.N., Nielsen, D.C., Ma, L., Ahuja, L.R., 2007. Comparison of modeling approaches to quantify residue architecture effects on soil temperature and water. *Soil Tillage Res.* 95 (1–2), 84–96.
- Lesschen, J.P., Velthof, G.L., de Vries, W., Kros, J., 2011. Differentiation of nitrous oxide emission factors for agriculture soils. *Environ. Poll.* 159, 3215–3222.
- Li, Z.Z., Ma, L., Flerchinger, G.N., Ahuja, L.R., Wang, H., Li, Z., 2012. Simulation of overwinter soil water and soil temperature with SHAW and RZ-SHAW. *Soil Sci. Soc. Am. J.* 76 (5), 1548–1563.
- Liu, X., Mosier, A.R., Halvorson, A.D., Zang, F.S., 2005. Tillage and nitrogen application effects on nitrous and nitric oxide emission from irrigated corn fields. *Plant Soil* 276, 235–249.
- Livingston, G.P., Hutchinson, G.L., 1995. Enclosure-based measurement of trace gas exchange: applications and sources of error. In: Matson, P.A., Harriss, R.C. (Eds.), *Biogenic Trace Gases: Measuring Emissions from Soil and Water*, Methods in Ecology. Blackwell Science/Cambridge Univ. Press, Cambridge, UK, pp. 14–51.
- Ma, L., Shaffer, M.J., Ahuja, L.R., 2001. Application of RZWQM for soil nitrogen management. In: Shaffer, M.J., Ma, L., Hansen, S. (Eds.), *Modeling Carbon and Nitrogen Dynamics for Soil Management*. Lewis Publ., Boca Raton, FL pp. 265e301.
- Ma, L., Malone, R.W., Heilman, P., Karlen, D.L., Kanwar, R.S., Cambardella, C.A., Saseendran, S.A., Ahuja, L.R., 2007. RZWQM simulation of longer-term crop production, water, and nitrogen balance in northeast Iowa. *Geoderma* 140 (3), 284–296.
- Ma, L., Ahuja, L.R., Saseendran, S.A., Malone, R.W., Green, T.R., Nolan, B.T., Bartling, P. N.S., Flerchinger, G.N., Boote, K.J., Hoogenboom, G., 2011. A protocol for parameterization and calibration of RZWQM in field research. In: Ahuja, L.R., Ma, L. (Eds.), *Methods of introducing system models into agricultural research*. SSSA, Madison, Wisconsin, pp. 1–64.
- Ma, L., Ahuja, R., Nolan, B.T., Malone, R.W., Trout, T.J., Qi, Z., 2012a. Root zone water quality model (RZWQM2): model use, calibration and validation. *Am. Soc. Agric. Biol. Eng.* 55 (4), 1425–1446.
- Ma, L., Fleringer, G.N., Ahuja, L.R., Sauer, T.J., Prueger, J.H., Malone, R.W., Hatfield, J.L., 2012b. Simulating the surface energy balance in a soybean canopy with the SHAW and RZ-SHAW models. *Am. Soc. Agric. Biol. Eng.* 55 (1), 175–179.
- Malone, R.W., Ma, L., Heilman, P., Karlen, D.L., Kanwar, R.S., Hatfield, J.L., 2007. Simulated N management effects on corn yield and tile drainage nitrate loss. *Geoderma* 140, 272–283.
- Malone, R.W., Meek, W.D.W., Ma, L., Jaynes, D.B., Nolan, B.T., Karlen, D.L., 2011. Quality assurance of weather data for agricultural system model output: A case study using the Walnut Creek watershed in central Iowa. In: Ahuja, L.R., Ma, L. (Eds.), *Methods of Introducing System Model into Agricultural Research*. SSSA, Madison Wisc, pp. 283–295.
- McTaggart, I.P., Akiyama, H., Tsuruto, H., Ball, B.C., 2002. Influence of soil physical properties, fertilizer type, and moisture tension on N<sub>2</sub>O and NO emissions from nearly saturated Japanese upland soil. *Nutr. Cycl. Agroecosyst.* 63, 207–211.
- Metivier, K.A., Patten, E., Grant, R.F., 2009. Using the ecosystem mathematical model to simulate temporal variability of nitrous oxide emissions from a fertilized agricultural soil. *Soil Biol. Biochem.* 41, 2370–2386.
- Miller, N., Robertson, G.P., Grace, P.G., Gehl, R.J., Hoben, J.P., 2010. Nitrogen fertilizer management for nitrous oxide mitigation in intensive corn (Maize) production: an emission reduction protocol for US Midwest agriculture. *Mitig. Adapt. Strateg. Glob. Change* 15, 185–204.
- Moriyas, D.N., Arnold, J.G., Van Liew, M.W., Ginger, R.L., Harmel, R.D., Veith, T.L., 2007. Model evaluation for systematic quantification of accuracy in watershed simulations. *Am. Soc. Agric. Biol. Eng.* 885–900.
- Mosier, A.R., Parton, W.J., Valentine, D.W., Ojima, D.S., Schimel, D.S., DelGado, J.A., 1996. CH<sub>4</sub> and N<sub>2</sub>O fluxes in the Colorado short grass steppe: 1. Impact of landscape and nitrogen addition. *Glob. Biogeochem. Cycles* 10, 387–399.
- Mosier, A.R., Halvorson, A.D., Reule, C.A., Liu, X.J., 2006. Net global warming potential of and greenhouse gas intensity in irrigated cropping systems in Northeastern Colorado. *J. Environ. Qual.* 35, 1584–1598.
- Mutegi, J.K., Munkholm, L.J., Petersen, B.M., Hansen, E.M., Petersen, S.O., 2010. Nitrous oxide emission and controls as influenced by tillage and crop residue management. *Soil Biol. Biochem.* 42, 1701–1711.
- Olson-Rutz, K., Jones, C., Dinkins, C.P., 2011. Enhanced efficiency fertilizers. EB0188. *Montana State Univ. Ext., Bozeman*.
- Oreskes, N., Shrader-Frechette, K., Belitz, K., 1994. Verification, validation, and confirmation of numerical models in the Earth sciences. *Science* 263 (5147), 641–646.
- Parkin, T.B., Kaspar, T.C., 2006. Nitrous oxide emission from corn-soybean rotation in the Midwest. *J. Environ. Qual.* 35, 1495–1506.
- Parton, W.J., Holland, E.A., Del Grosso, S.J., Hartman, M.D., Martin, R.E., Mosier, A.R., Ojima, D.S., Schimel, D.S., 2001. Generalized model for NO<sub>x</sub> and N<sub>2</sub>O emissions from soils. *J. Geophys. Res.* 106, 17403–17420.
- Quemada, M., Cabrera, M.L., 1997. Temperature and moisture effects on C and N mineralization from surface applied residue. *Plant Soil* 189, 127–137.
- Ravishankara, A.R., Daniel, J.S., Portman, R.S., 2009. Nitrous oxide (n<sub>2</sub>O): the dominant ozone-depleting substance in the 21st century. *Science* 326, 123–125.
- Reay, D.S., Davidson, E.A., Smith, K.A., Smith, P., Melillo, J.M., Dentener, F., Crutzen, P. J., 2012. Global agriculture and nitrous oxide emissions. *Nature* 1–7.
- Skiba, U., Smith, K.A., 2000. The control of nitrous oxide emission from agricultural and natural soil. *Global Change Sci.* 2, 378–386.
- Thorp, K.R., Jaynes, D.B., Malone, R.W., 2008. Simulating the long-term performance of drainage water management across the Midwestern United States. *Trans. ASABE* 51 (3), 961–976.
- Vigil, M.F., Eghball, B., Carbrera, M.L., Jakubowski, B.R., Davis, J.G., 2002. Accounting for seasonal nitrogen mineralization: an overview. *J. Soil Water Conserv.* 464–469.
- Wang, H., Fleringer, G.N., Lemke, R., Brandt, K., Goddard, T., Sprout, C., 2010. Improving SHAW long-term soil moisture prediction for continuous wheat rotations, Alberta, Canada. *Canadian J. Soil Sci.* 90 (1), 37–53.
- Wang, J., Ahang, X., Liu, Y., Pan, X., Liu, P., Chen, Z., Huang, T., Xion, Z., 2012. Modeling impacts of Alternative Practices on net global warming potential and greenhouse gas intensity from rice-wheat annual rotation in China. *PLoS ONE* 7 (9), e45668.
- Zhang, Y., Qian, Y., Mecham, B., Parton, W.J., 2013. Development of best turfgrass management practices using the DAYCENTR model. *Agron. J.* 105 (4), 1151–1159.