

## Shipping Instructions:

Be sure that the clear covers or mats are secured to the bases and that all plates are labeled. Send an email with attached genotyping sample file to [gina.brown-guedira@ars.usda.gov](mailto:gina.brown-guedira@ars.usda.gov) *prior* to shipping the samples. Preferably, frozen samples would be shipped overnight in a Styrofoam container with ice.

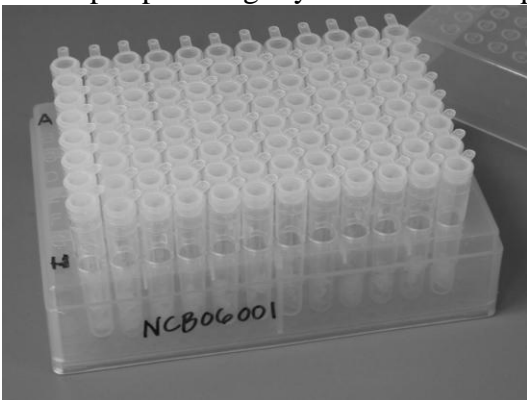
## Please use the following shipping address:

**Dr. Gina Brown-Guedira**  
USDA-ARS, NCSU-Crop Science  
4118 Williams Hall  
100 Derieux Place  
Raleigh, NC 27695

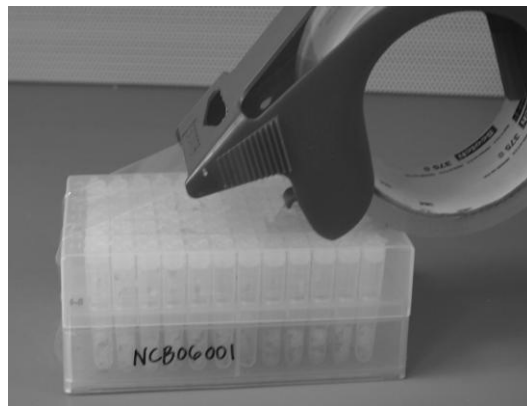
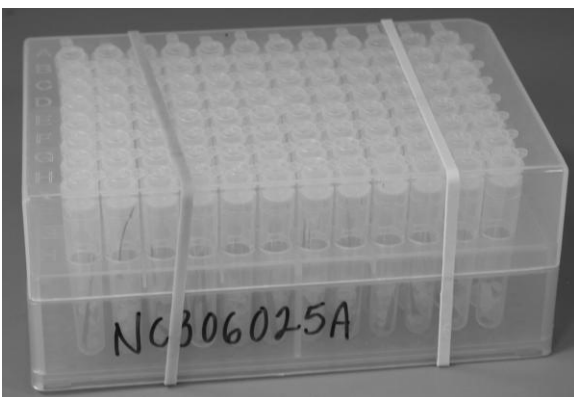
Phone number: 919-513-7926

Recommended couriers are FedEx, UPS or DHL. Deliveries are not brought to the lab but left in the main office on second floor. **Please** send email to [kim.howell@ars.usda.gov](mailto:kim.howell@ars.usda.gov), [gina.brown-guedira@ars.usda.gov](mailto:gina.brown-guedira@ars.usda.gov) or [jared.smith@ars.usda.gov](mailto:jared.smith@ars.usda.gov) **on the day that you ship**, with info about which courier and if you include the tracking # that is just an added bonus. Thanks.

Keep the tubes capped until you are ready to collect the tissue sample if you are using silica. You should check that the strip caps are tightly closed after the plates arrive and after collecting your samples.



The silica should be blue until after you collect your samples and it will turn (slowly) pink as it dries your samples. If the plates arrive or turn pink before use, dry them in an oven until they are blue again.



Use packing tape or rubber bands to keep covers on the 1.1 ml tube racks