

IAH CL4 development programme

Dr Michael Johnson

Head of Laboratory, Pirbright



Tetrapartite Meeting
Des Moines USA May 29



IAH Development Programme

IS4L



- £10M : £5M BBSRC, £5M Defra
- 600 sq m laboratory space
- commissioned and validated for ACDP3/SAPO4 in vitro work
- undergoing final licensing at present
- expect staff to decant in throughout June



IAH Development Programme DP1

- IAH Science Strategy to consolidate all science on one site at Pirbright
- Significant investment £100M + : £90M BIS, £45M BBSRC
- Highest standards for bio-containment
- Completion early 2014



IAH Development Programme



IAH Development Programme



From 2007 to 2010 the site was largely under-developed:
May 2010 funding was secured
July-August 2010 pre-works package – utilities/gas electricity
September 2010 official construction start

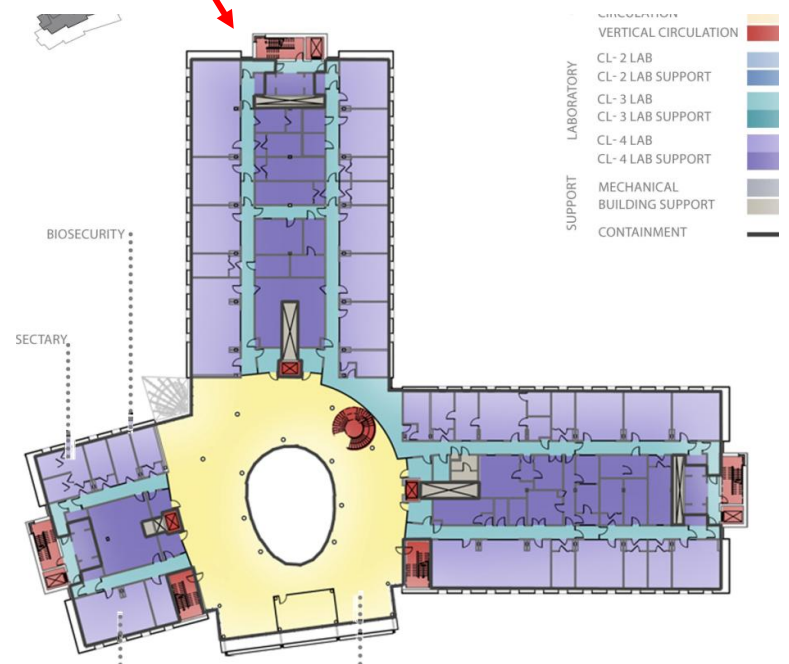
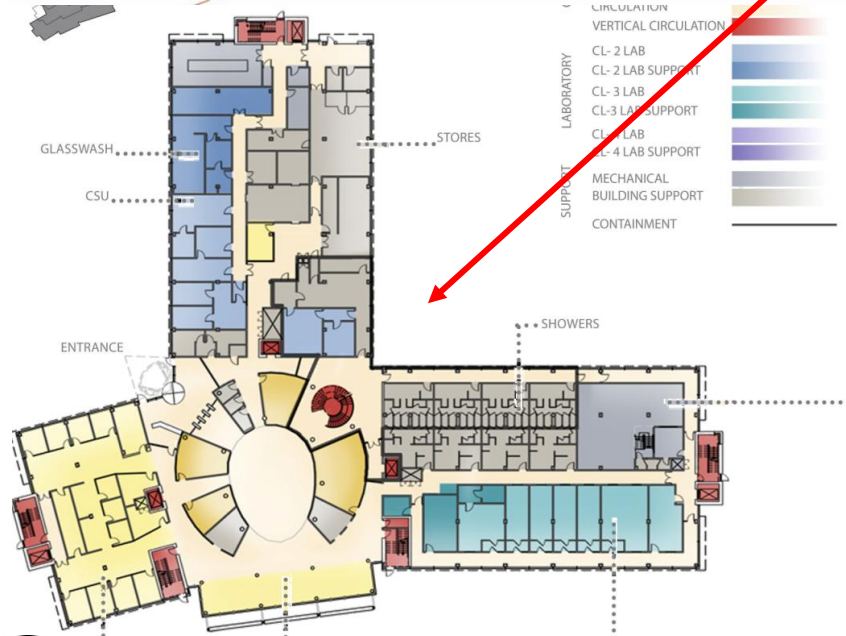
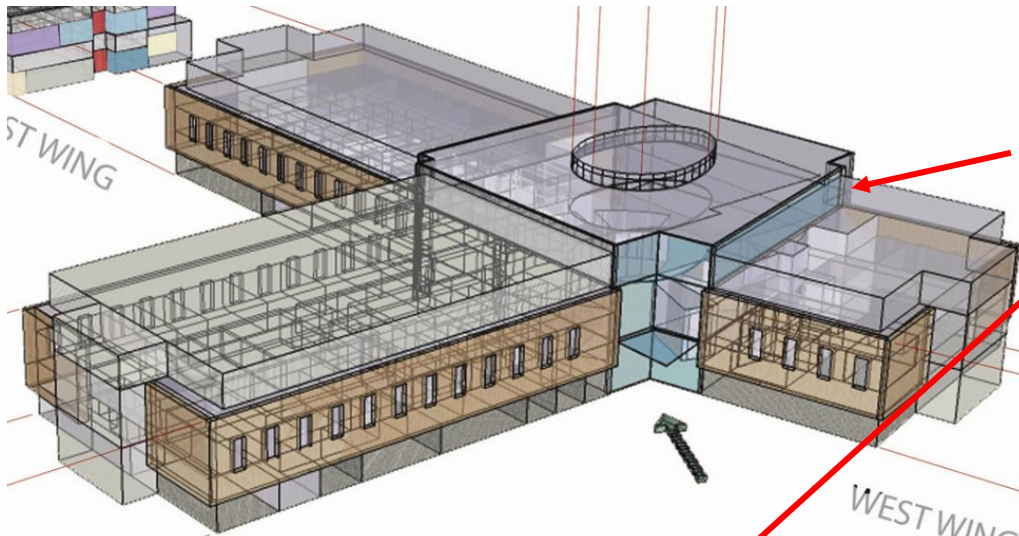


IAH Development Programme

Plan Building Orientation

- Isometric View (looking at entrance)
- Ground floor
- First (main Lab) floor

Note black arrow shows current view from site



IAH Development Programme



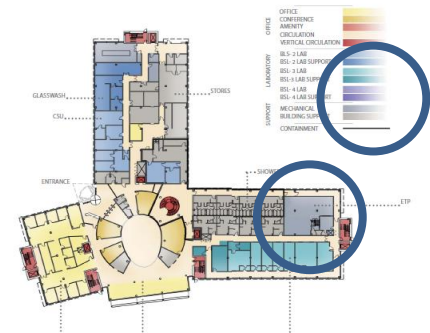
EARLY SITE WORKS:
Drainage pits, ETP, concrete base slab



IAH Development Programme



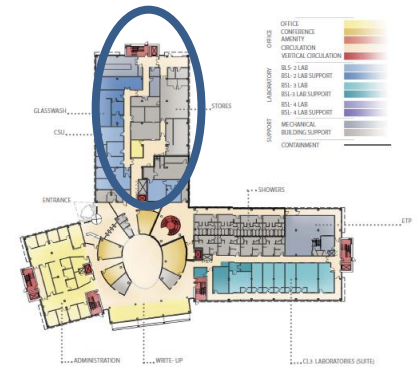
ETP and energy centre



IAH Development Programme



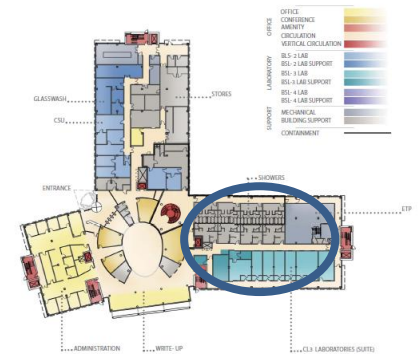
NORTH WING
ground floor slab and walls



IAH Development Programme



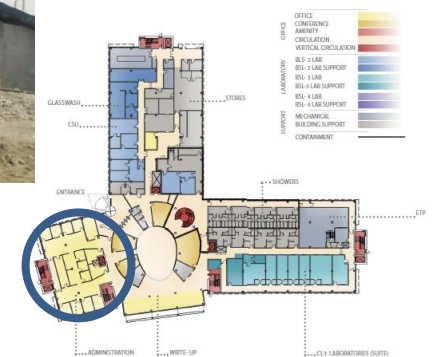
EAST WING
ground floor slab



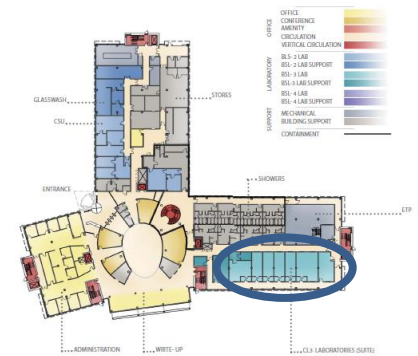
IAH Development Programme



WEST WING
ground floor slab and wall



IAH Development Programme



EAST WING (CL3 labs outside containment ground floor slab and walls



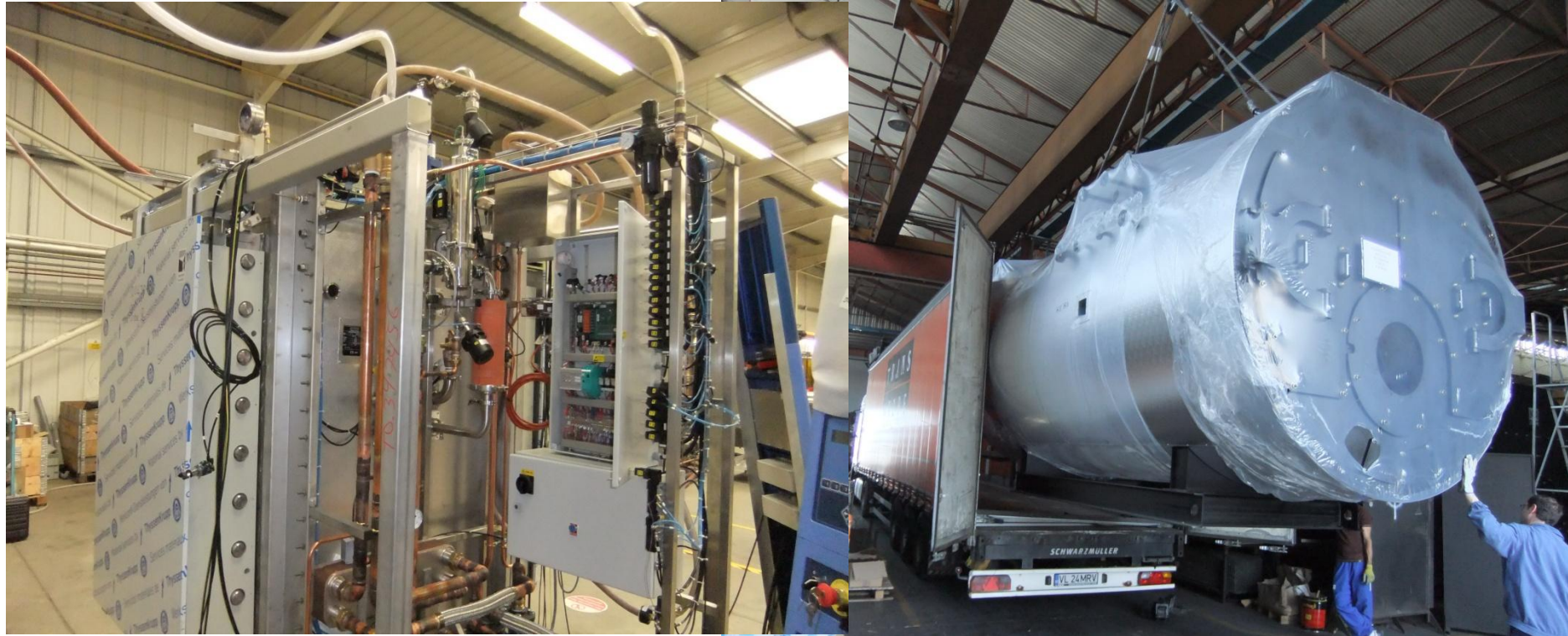
IAH Development Programme



Stainless steel cast ins



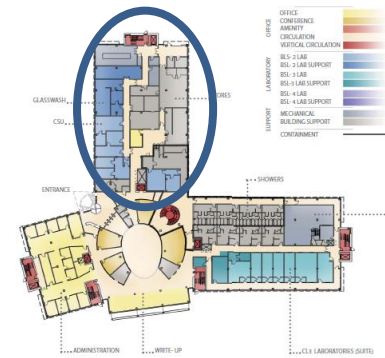
IAH Development Programme



Much of the equipment is manufactured off site - Factory acceptance tested and Installed during the build



IAH Development Programme



NORTH WING ground floor + first floor slab



IAH Development Programme

NORTH WING (invisible from current position)

ENERGY CENTRE



WEST WING

- Administration / Dry Science
- CL4 Labs

CENTRAL ATRIUM

- Meeting Spaces
- Write-up
- Canteen

EAST WING

- Showers
- CL3 Labs
- CL4 Labs

BASEMENT

- ETP
- Drainage Tunnel Entrance



- Plant – Air Handling Units
- Plant – HEPA Deck
- Labs
- Labs / Support / Administration



IAH Development Programme



THANK YOU

